

# Vijeo Designer V6.0



At a glance

# Expand supported targets portfolio

- Small panels

- Magelis STU 5"7



- Industrial PCs

- iPCs new generation: Magelis BOX PC



# Develop new protocols

- Zelio / Millenium Protocol support on Magelis STO 501
  - In order to replace Magelis XBTN legacy equipment by Magelis STO
  - Magelis STO 501 has Green/Red/Orange colors (same as STO511)



# Open to partners to address new markets

- Generation and Download HMI application from a partner tool



- Configuration tool of the partner access directly to the Vijeo Designer RunTime
- Ability to open, generate and download a Vijeo Designer application using 3rd party tool ( Build Time Control API), like Vijeo Designer BuildTime

# New features to address new markets

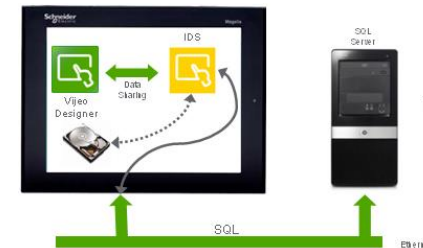


- Intelligent Data Service (IDS) full implementation (FDA 21 CFR Part 11)

- Address Pharma and F&B markets with traceability features
- Track in an easy way all the operator inputs and relevant values linked to a process to ensure full and safe traceability and professional reporting of a process including one or several Vijeo Designer targets in order to fulfill all needs of traceability including FDA 21 CFR Part 11 norm



*Stand-Alone solution*



*Stand-Alone solution with remote data logging*



*Distributed solution*

# New features to address new markets



## ● Intelligent Data Service (IDS) Report Printing

- Allow to create reports which can be shared between several workstations
- Advanced editor for high customization
- Print Preview
- Print or export into a file on disk



# New features to address new markets

- User Identification object (Active Directory like)



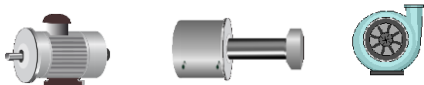
- The right answer to Pharma/F&B customer habits (*ease compliance with FDA 21 Part 11 norm*)
  - Passwords can expire after a specified period of time.
  - Users are locked out after a specified number of failed login attempts.
  - Enforce the strength of a password when a new one is chosen.
  - Ensure that new passwords have not been previously used.
  - Ensure that a user must change the password upon first login



# Design Guide

## ● HMI Design Guide

- A HMI Design Guide is provided to help our customers to successfully design and build effective and professional HMIs



Vijeo Designer® design guide: how to create successful screens

10 stages for successful HMI design



**Hints and tips**  
> At each stage, you will find advice and design rules to follow in this section to obtain the best result.

**HMI?**  
The HMI, -Human Machine Interface- is a means of communication between the user and the machine and acts as an interpreter. The HMI adapts the logic of the machine to that of the user to avoid any misinterpretation during exchanges of information.

**Method**  
To successfully design and build effective, professional HMIs, it is important to follow the stages described in this design guide step by step.

1. **Define the architecture** ▶  
Identify, organise, name
2. **Structure the content** ▶  
Create the menus
3. **Establish the principles for navigation** ▶  
Organise the access paths
4. **Structure the page layout** ▶  
Define the page typologies
5. **Create content** ▶  
Build the block diagram on the home page
6. **Add dynamics** ▶  
Choose buttons and active zones
7. **Highlight** ▶  
Use icons, pictures and colours
8. **Make it legible** ▶  
Adjust light and contrasts
9. **Create texts and dialogue tools** ▶  
Make them legible and visible
10. **Create a dialogue box** ▶  
Create clear messages

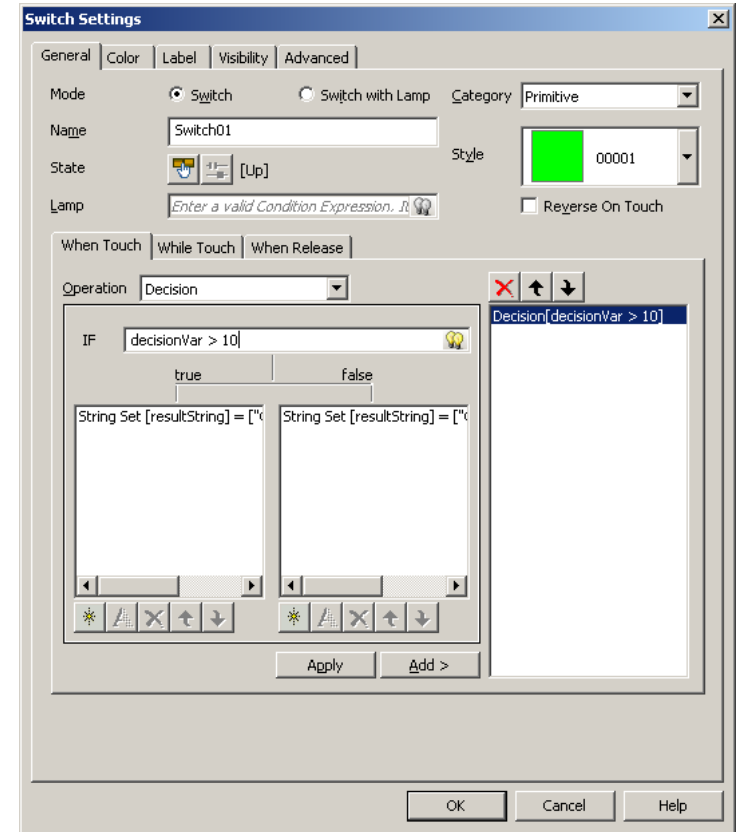
www.schneider-electric.com





# Improve existing features

- New Operations for Switches and Actions
  - User can set up a decision statement and two operation lists in a Decision operation. Depending on the evaluation of the statement, one of the operation lists will be executed when the Decision operation is triggered
- Example:
  - If  $\text{decisionVar} > 10$ , write “Condition was TRUE” in string
  - If  $\text{decisionVar} < 10$ , write “Condition was FALSE” in string



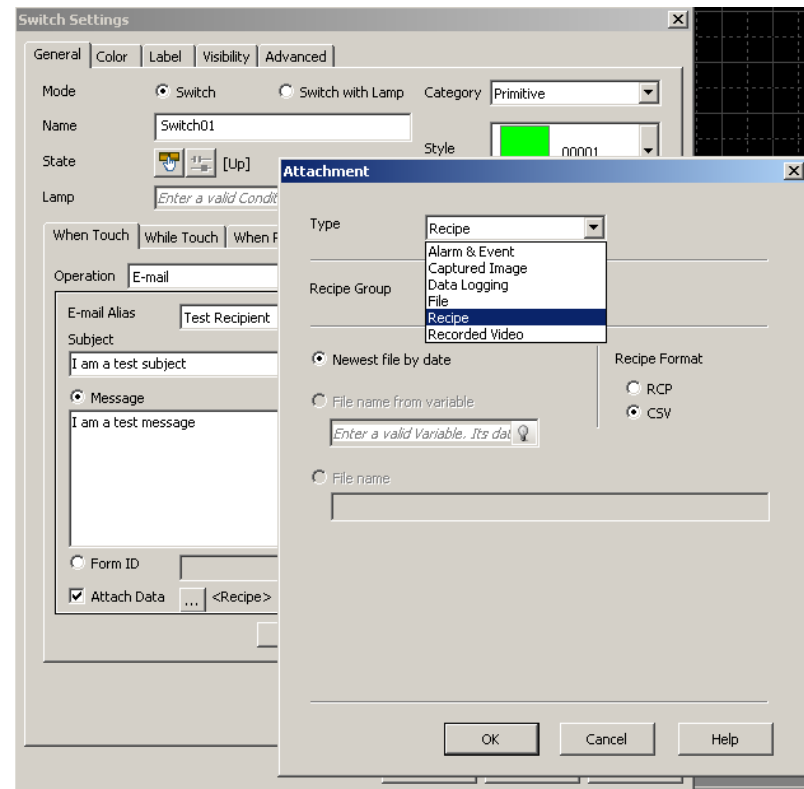


# Improve existing features: email

## ● Email with Attachment

- This is an extension of the E-mail feature to add useful attachments to be sent from a target machine:

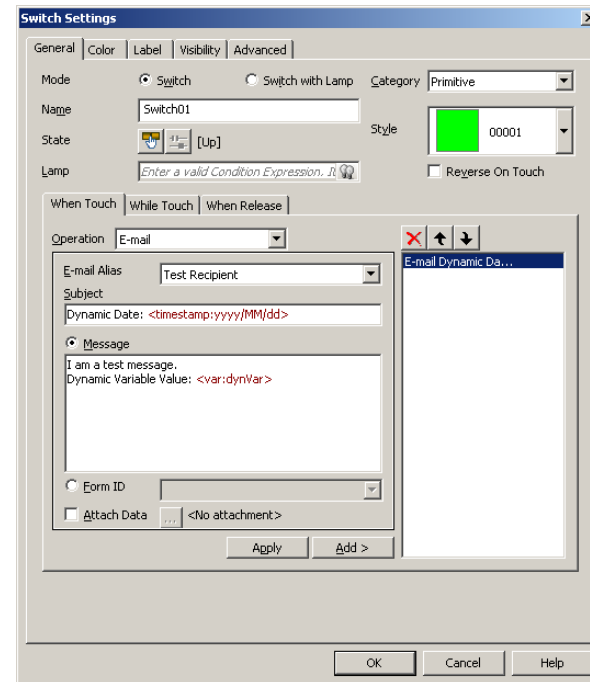
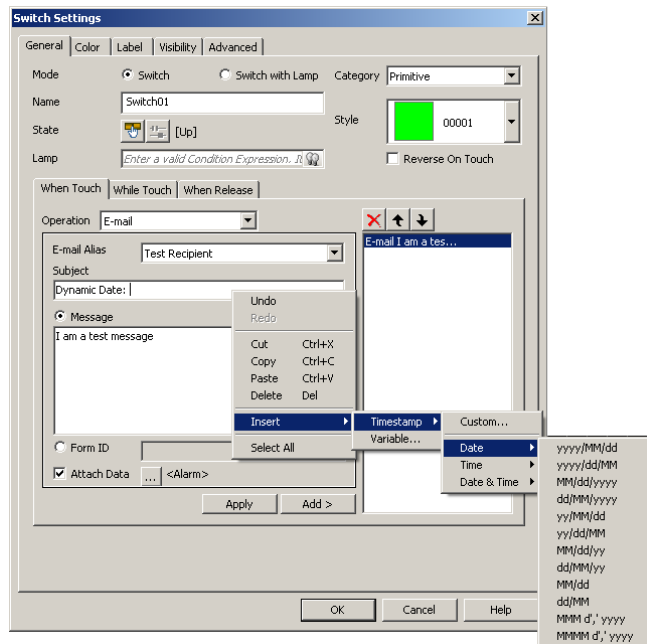
- Alarm & Event
- Captured Image
- Data Logging
- File
- Recipe
- Recorded video



# Improve existing features: email

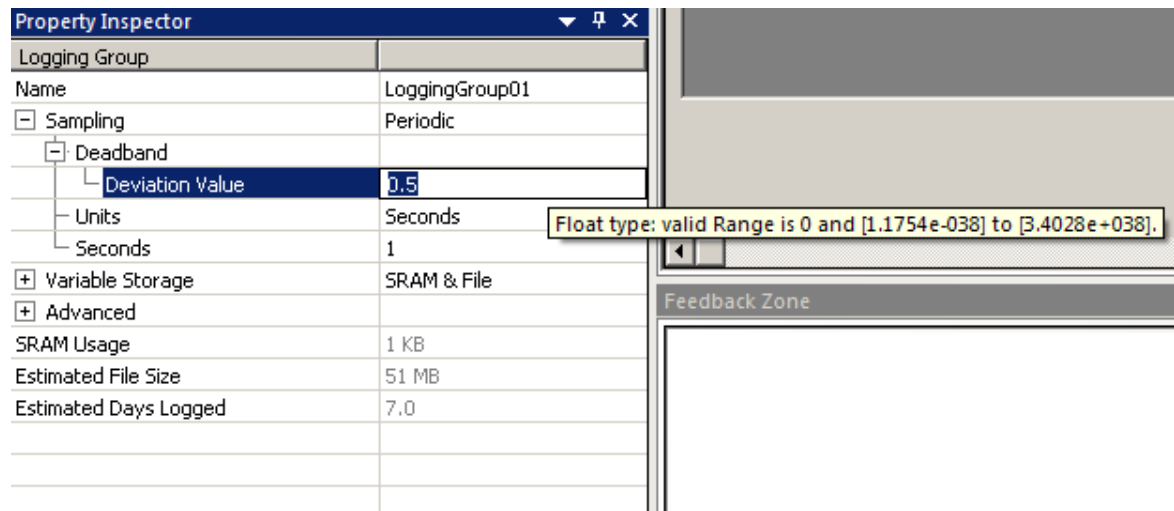
- Allow dynamic content in Email

- This feature is added to allow dynamic variable content in emails (subject and message) sent from the Target
- Based on the existing feature to allow text resources to have variable information, or timestamp information embedded in the message, this feature allows that same content to be in emails



# Improve existing features

- Data Logging: allow minor deviation
  - Log only variable values when change exceeds plus/minus user-defined value (Dead band support), to log only significant values and avoid noise

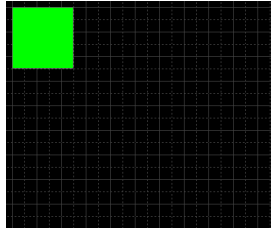


# Improve existing features

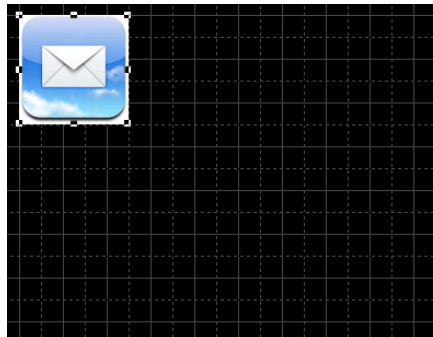
## ● Overlaying Images on Switches

- Users can now overlay an image on a Switch or Switch with Lamp.
- Helps to identify the purpose of the switch more visually.
- Example: Want to create a switch that sends an email

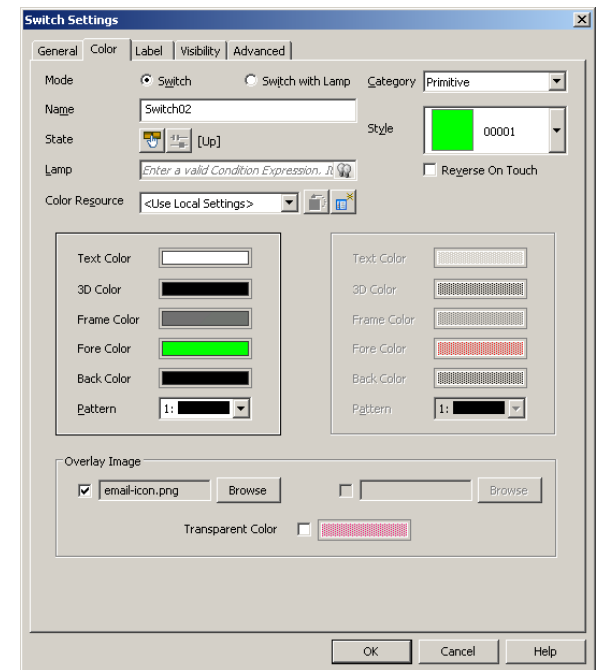
▪ A regular switch looks like this:



▪ In Switch settings, add an overlay image:



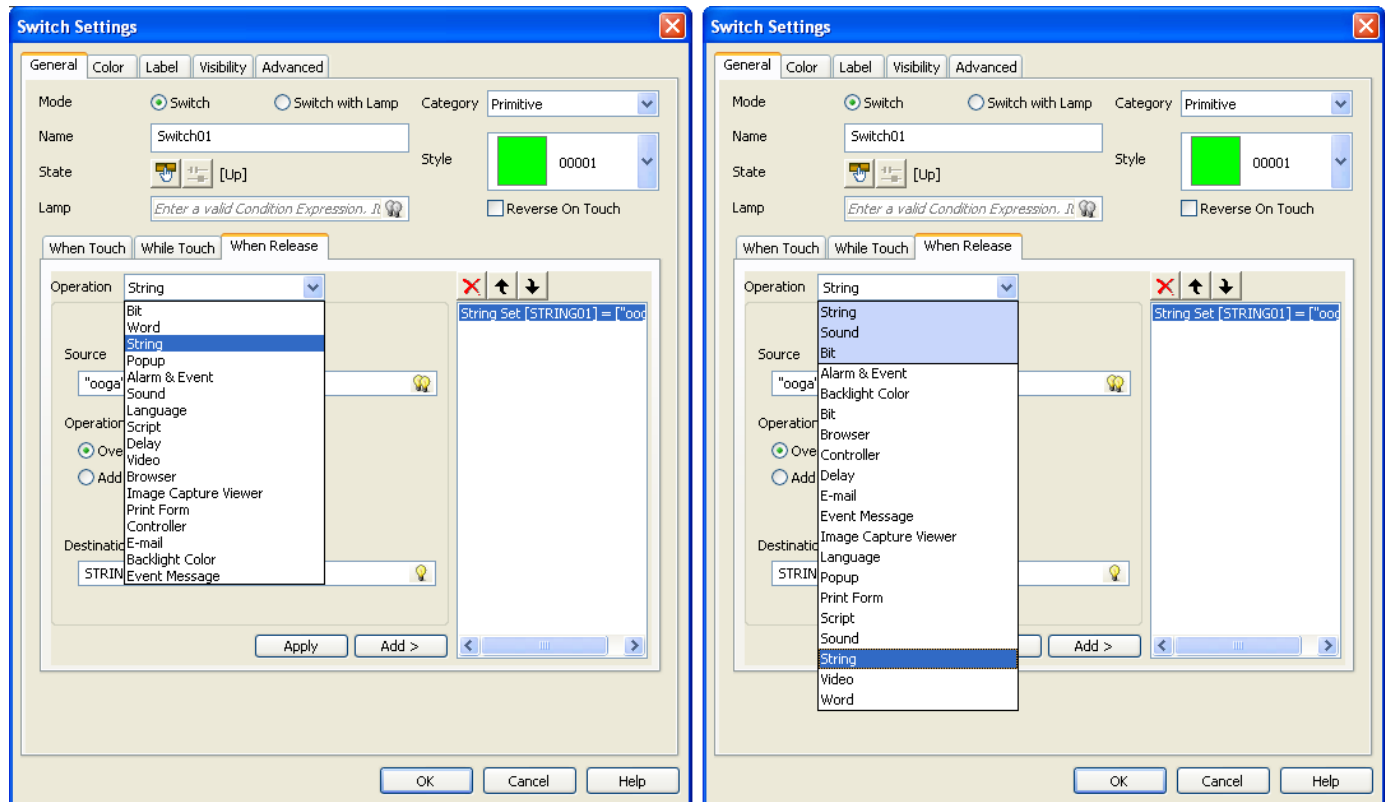
▪ Now it looks like this:



# Improve existing features: buildtime

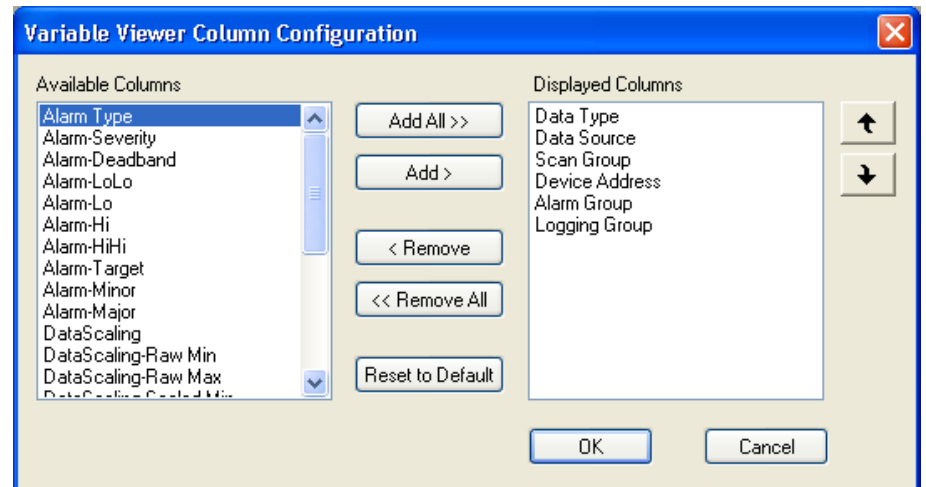
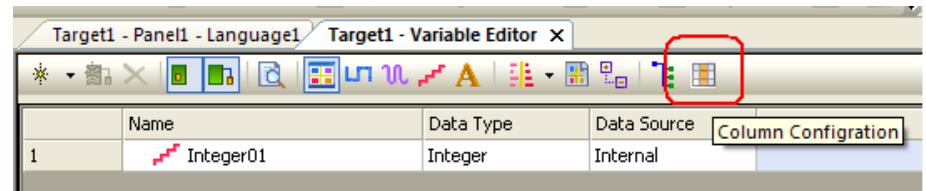
- Most Recently Used entries in Dropdown lists

- The most recent user choices are tracked and listed above the full list of available operations.
- The last 3 used choices will be remembered



# Improve existing features: buildtime

- Allow customizing which settings to display in variable view
  - This feature allows users to view, and update variables more easily. Users will be able to select and arrange variable property columns in Variable Viewer from the available column list.

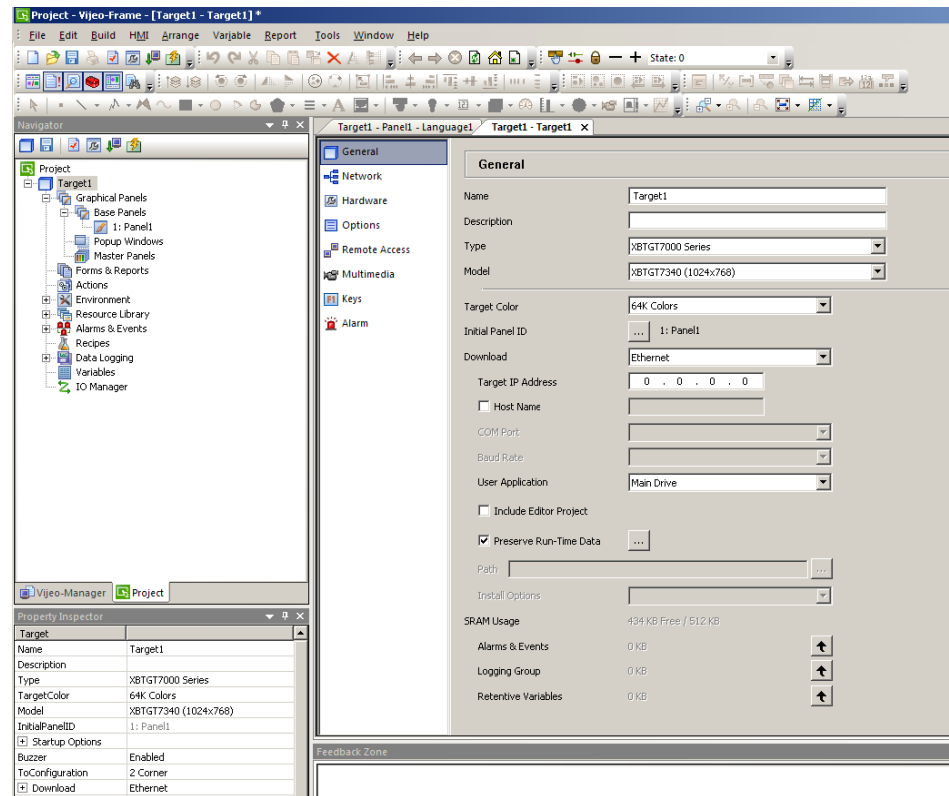




# Improve existing features: buildtime

## ● Improved User Interface of Target Properties

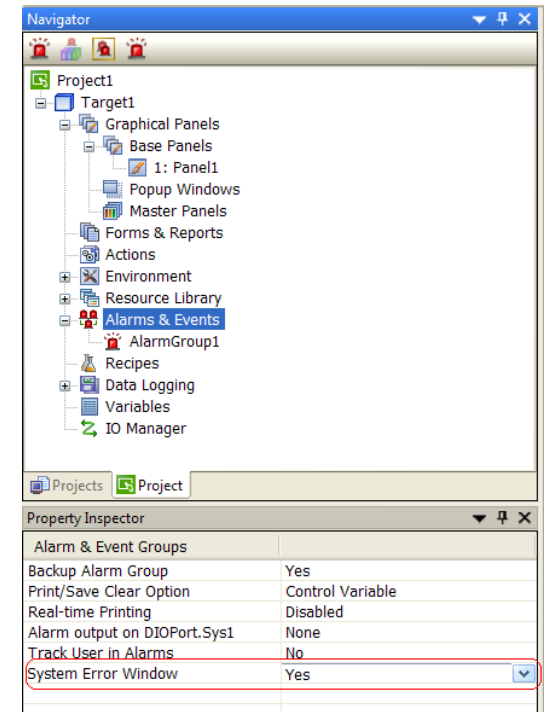
- New tabbed view of Target Properties.
- Makes each settings more accessible.
  - General
  - Network
  - Hardware
  - Options
  - Remote Access
  - Multimedia
  - Keys
  - Alarm



# Improve existing features: runtime

## ● Show/Hide System Error Messages

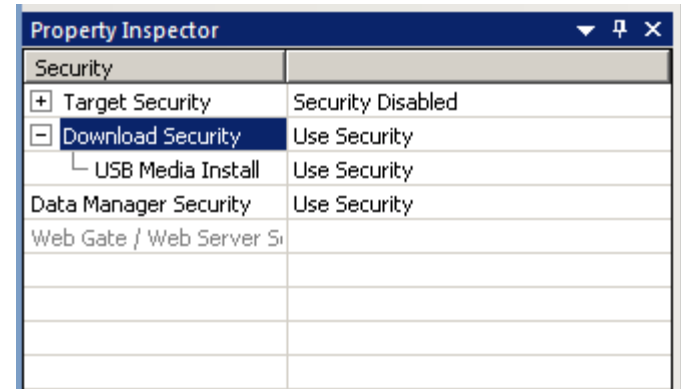
- An option is provided to show or hide the system error message windows at run-time
- Useful for smaller targets where messages take up space
- Errors still logged, just not displayed
- Setting available in “Alarms and Events” property inspector



# Improve existing features: security

## ● Project Download Security Using External Drives

- In the existing functionality, user authentication is done for connected project downloads (e.g., via Ethernet or USB cable) if download security is enabled.
- The new feature provides the security option for project downloading to USB drives and installing the project from the media (part of the File System downloads). If the security is enabled, user will be prompted for user name and password before transferring the project from the USB drive to the target machine.



The screenshot shows a 'Property Inspector' window with a table of security settings. The table has two columns: the first column lists security categories, and the second column shows their status. The 'Download Security' category is expanded to show sub-items.

Security	
+ Target Security	Security Disabled
- Download Security	Use Security
└ USB Media Install	Use Security
Data Manager Security	Use Security
Web Gate / Web Server Si	

# Improve existing features

## ● Preserve Target System Settings

- Users can now preserve Target System Settings when downloading a project to a target device

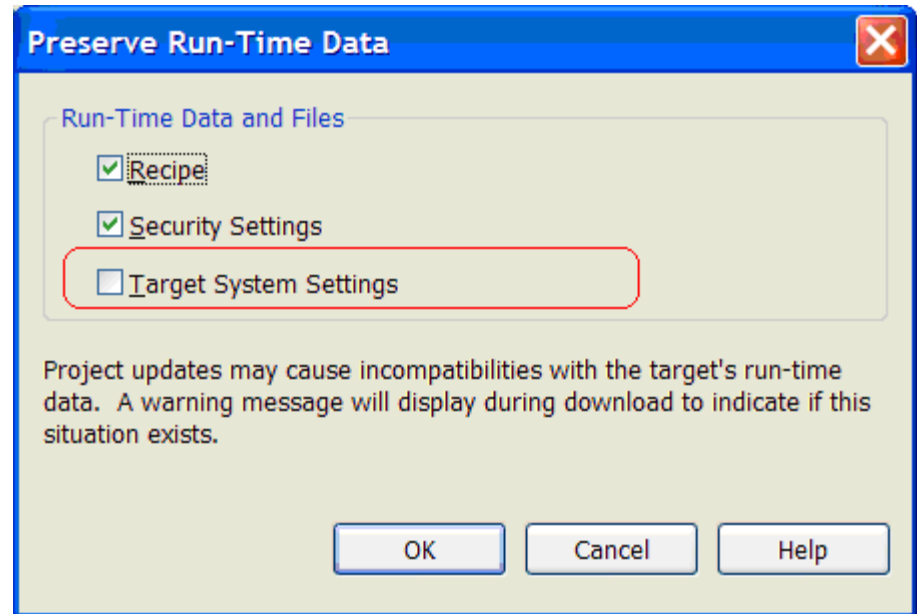
- Network

- Static IP
- DHCP
- MAC/DNS

- Backlight

- Wait
- Wait Time

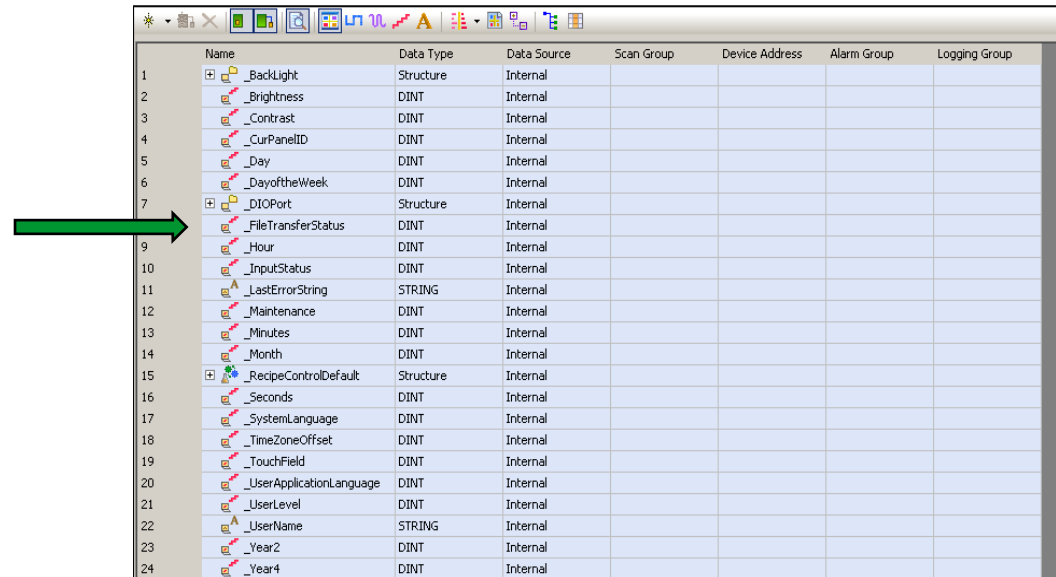
- Can also choose to overwrite these settings upon download.



# Improve existing features

## ● New System Variable: File Transfer Status

- Shows file transfer status for CF Card and USB drive.
- Shows status of “Copy Data To/From Drive” operations.
- Named `_FileTransferStatus` and has 3 states:
  - 0 = Ready
  - 1 = Busy
  - 2 = Error

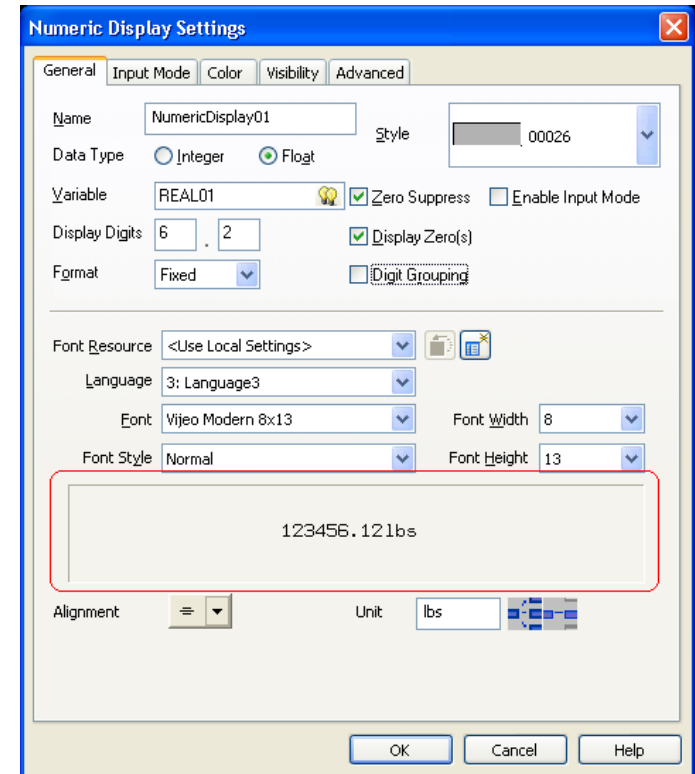


	Name	Data Type	Data Source	Scan Group	Device Address	Alarm Group	Logging Group
1	[-] _BackLight	Structure	Internal				
2	[-] _Brightness	DINT	Internal				
3	[-] _Contrast	DINT	Internal				
4	[-] _CurPanelID	DINT	Internal				
5	[-] _Day	DINT	Internal				
6	[-] _DayoftheWeek	DINT	Internal				
7	[-] _DIOPort	Structure	Internal				
8	[-] <b>_FileTransferStatus</b>	DINT	Internal				
9	[-] _Hour	DINT	Internal				
10	[-] _InputStatus	DINT	Internal				
11	[-] _LastErrorString	STRING	Internal				
12	[-] _Maintenance	DINT	Internal				
13	[-] _Minutes	DINT	Internal				
14	[-] _Month	DINT	Internal				
15	[-] [-] _RecipeControlDefault	Structure	Internal				
16	[-] _Seconds	DINT	Internal				
17	[-] _SystemLanguage	DINT	Internal				
18	[-] _TimeZoneOffset	DINT	Internal				
19	[-] _TouchField	DINT	Internal				
20	[-] _UserApplicationLanguage	DINT	Internal				
21	[-] _UserLevel	DINT	Internal				
22	[-] _UserName	STRING	Internal				
23	[-] _Year2	DINT	Internal				
24	[-] _Year4	DINT	Internal				

# Improve existing features

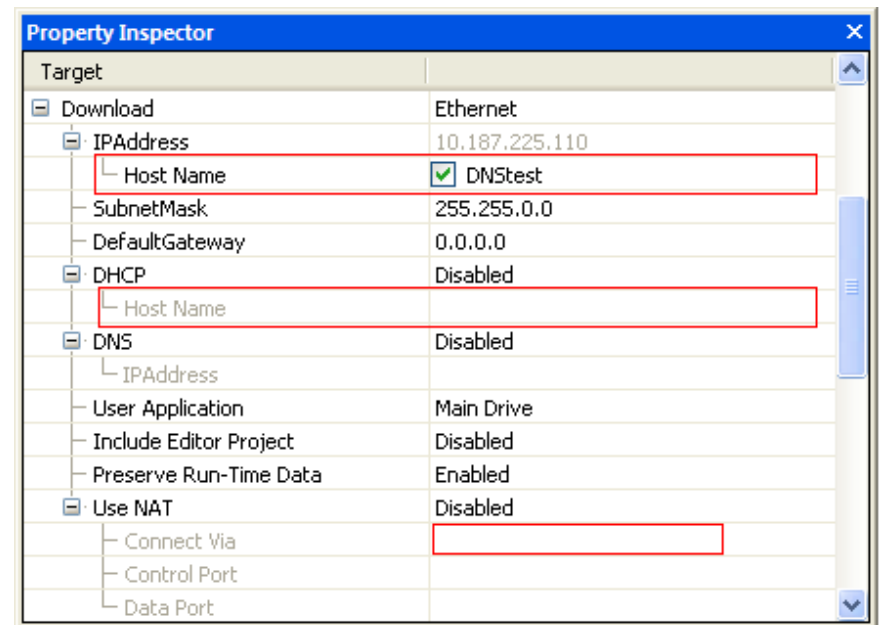
- Add Units in a Numeric Display

- Numeric Display objects are able to display numeric data with unit. The unit will be appended at the end of display data. With unit setting, Numeric Display objects are able to give users more specific information about displayed numeric data.

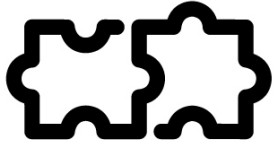


# Improve existing features: communication

- Ethernet link using device name/DNS instead IP address
  - Allow to have a Host Name when DHCP is enabled where only an IP address was supported before



# Compatibility with SoMachine



- Vijeo Designer 6.0 is the version embedded within SoMachine V3.0
- Vijeo Designer 6.0 cannot be installed on top of previous version of SoMachine.





Make the most  
of your energy

