

Technical Note – 120831

SoMachine USB - Download

M258 Boot application download via USB stick

Problem / Description:



M258

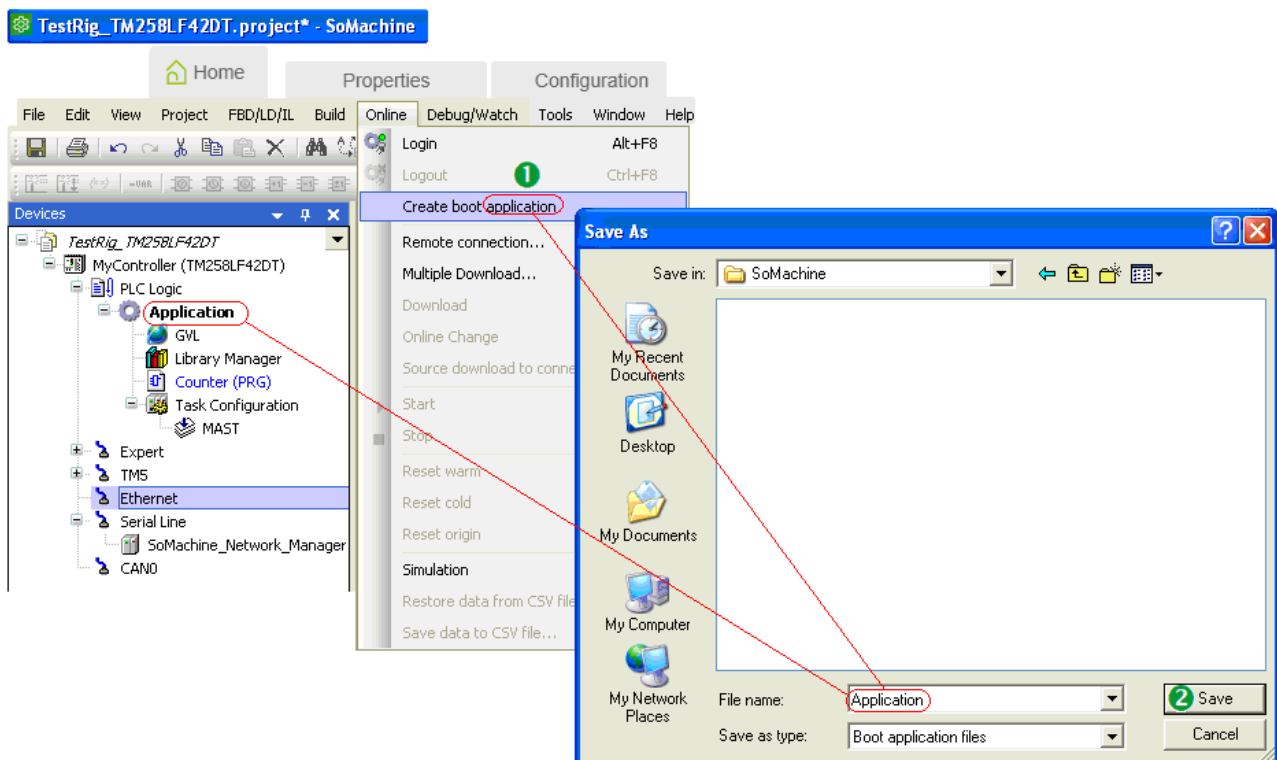
How do I download my application that was developed with SoMachine to a M258 controller using a **USB** memory stick.

NOTE: Always attempt a project download after a build, by cable, with SoMachine to test if the Controller (CPU) kicks into **RUN**. If this is OK then download via **USB** stick should succeed.

Solution / Information:

Under the Online Tab:

- Step 1: Create a Boot application.
- Step 2: Save the Boot application.



NOTE: Leave the file name as **Application** and do not change this.

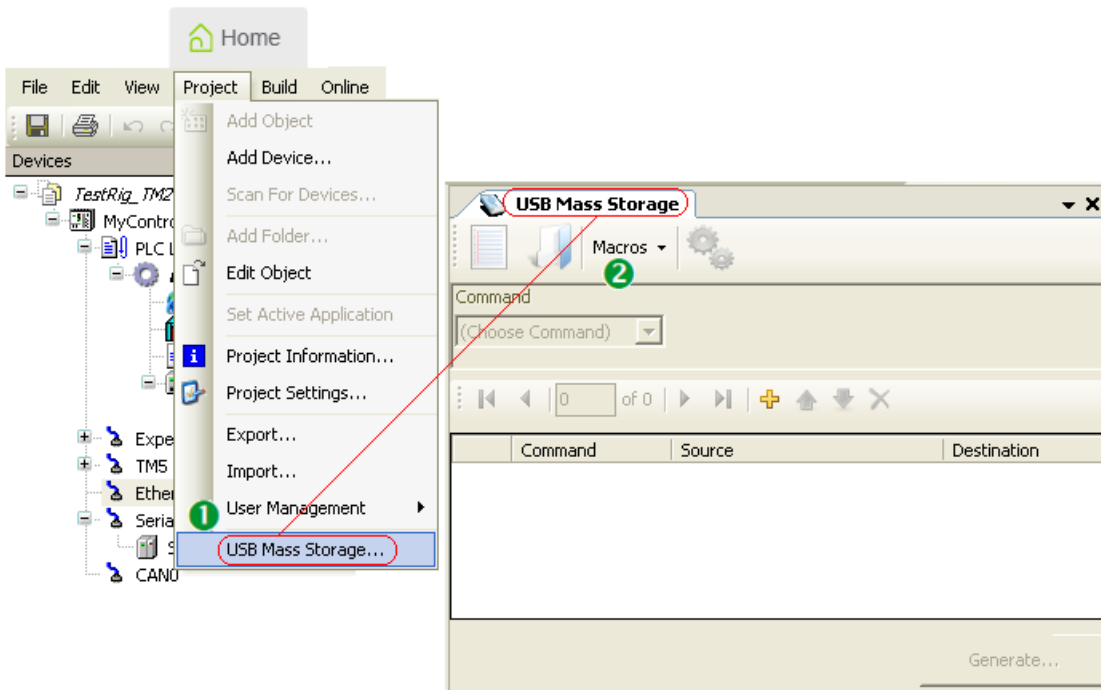
Written By : Chris Fox
 Approved Technical: Yes
 Document: Pg. 1 of 3

Title: Tech Support Engineer
 Title: SoMachine Application USB Download

Date: 6-Oct-14
 Ref: Tech Note 120831
 Version: 1.1

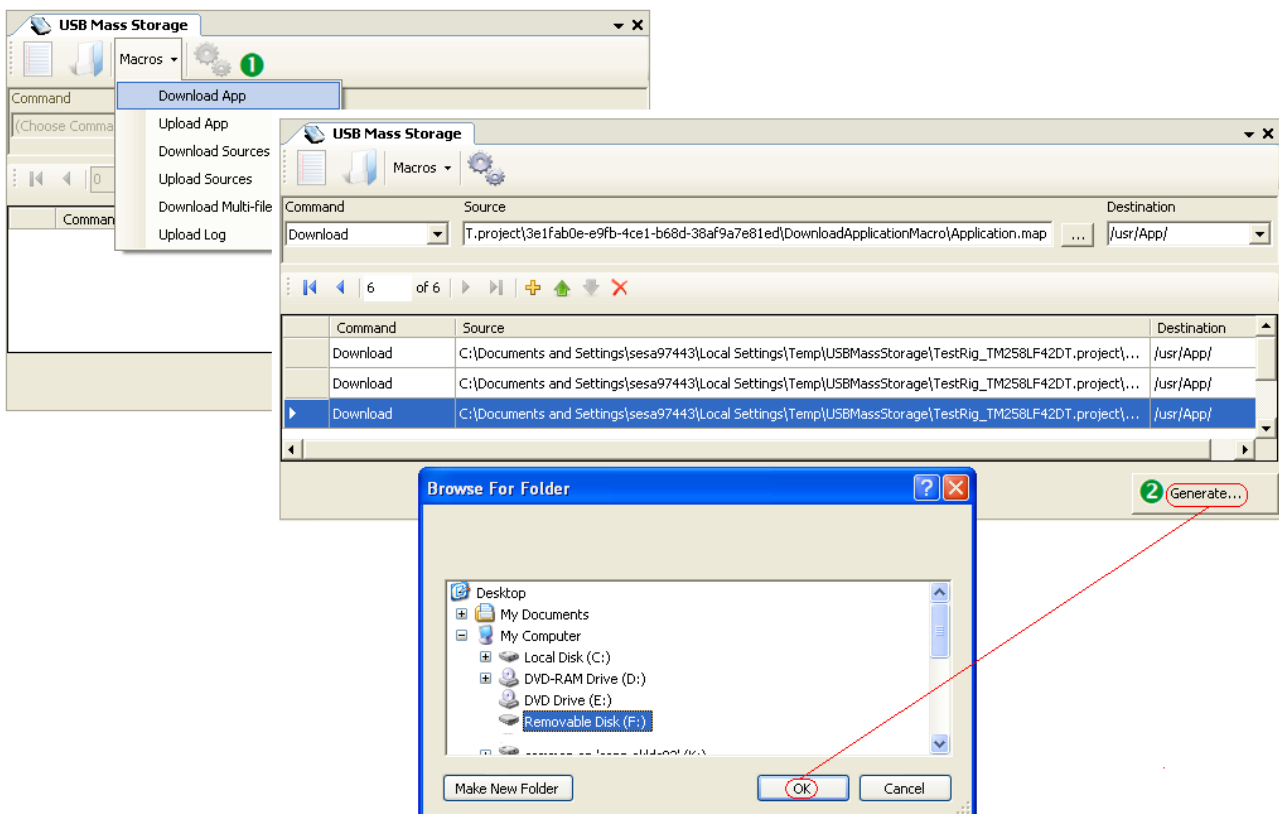
Under the Project Tab:

- Step 1: Open the USB Mass Storage window.
- Step 2: Navigate to the Macros Drop-Down under the USB Mass Storage window.



Under the Macros Drop-Down:

- Step 1: Select Download App.
- Step 2: Select Generate and the location of the Mass Storage Device and click OK.



If you create an offline boot application of the project that you want to store on the USB stick and you get any error messages (393) in the message window you need to do the following:

- If you perform a Clean All (Build -> Clean All) and the error message does not appear anymore in the message window, you are good to create the next boot application.
- If the error messages are persistent it might even be helpful to do a restart on the PC hosting the **SoMachine** software to ensure the cleaning of all residual code in cache.

The reason: Such error messages could occur if you copy and paste or exclude complete parts from build (complete CANopen for example) so that references are not available for a build of the rest.

Unfortunately these messages come up again even the excluded part from build is added again; that's why you should perform a Clean All to delete all the rubbish which might be somewhere in the memory or cache files.

Follow the Transfer procedure as described under the **SoMachine Helpfile** to complete the download to the controller.

Transfer Procedure

⚠ WARNING	
UNINTENDED EQUIPMENT OPERATION	
<ul style="list-style-type: none"> • You must have operational knowledge of your machine or process before connecting this device to your controller. • Be sure that guards are in place so that any potential unintended equipment operation will not cause injury to personnel or damage to equipment. 	
Failure to follow these instructions can result in death, serious injury, or equipment damage.	

Step	Action
1	Create the script with the USB Mass Storage editor.
2	Click Generate and select the USB memory key root directory. Result: The script and files are transferred on the USB memory key.
3	Plug the USB memory key into the controller. NOTE: The USB LED blinks green during transfer. At the end of the transfer the USB LED is solid green. If an error was detected the LED is solid red. When the controller has executed the script, the result is logged on the USB memory key (file /sys/CMD/Cmd.log).
4	Unplug the USB memory key. NOTE: A reboot is required to record the new application.

⚠ WARNING	
UNINTENDED EQUIPMENT OPERATION	
Consult the controller state and behavior diagram to understand the state that will be assumed by the controller after you cycle power.	
Failure to follow these instructions can result in death, serious injury, or equipment damage.	

Contact Schneider Electric Technical Support on **0800 652 999** for further information or Email at: sales@nz.schneider-electric.com