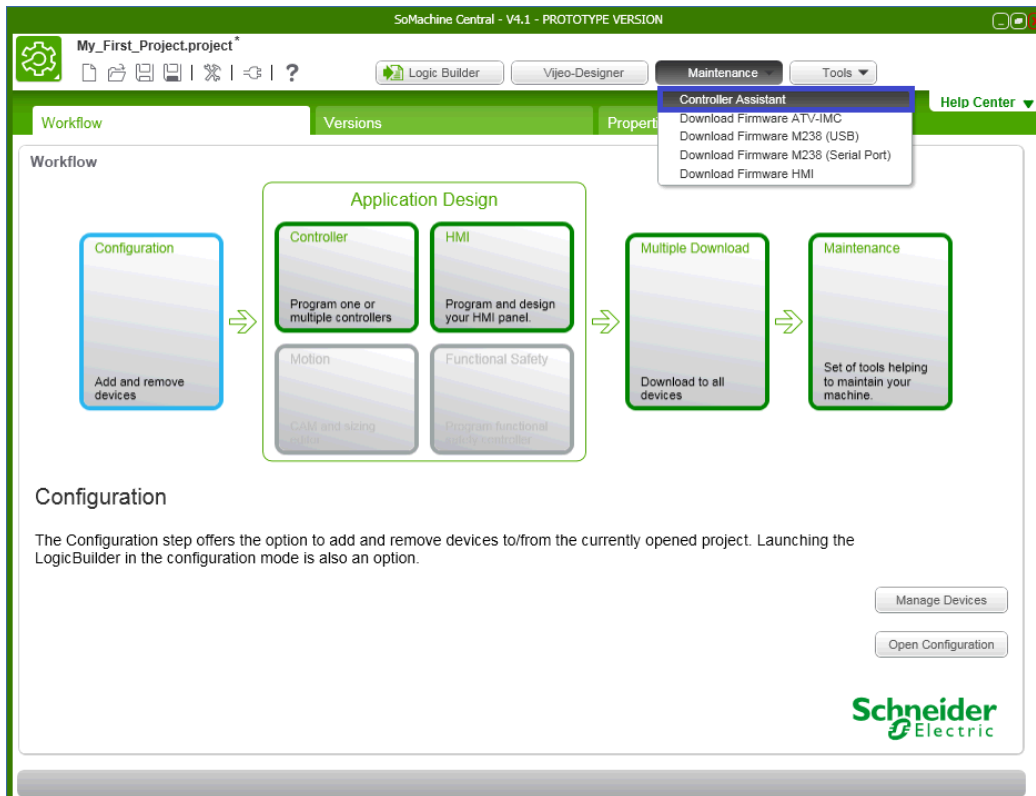




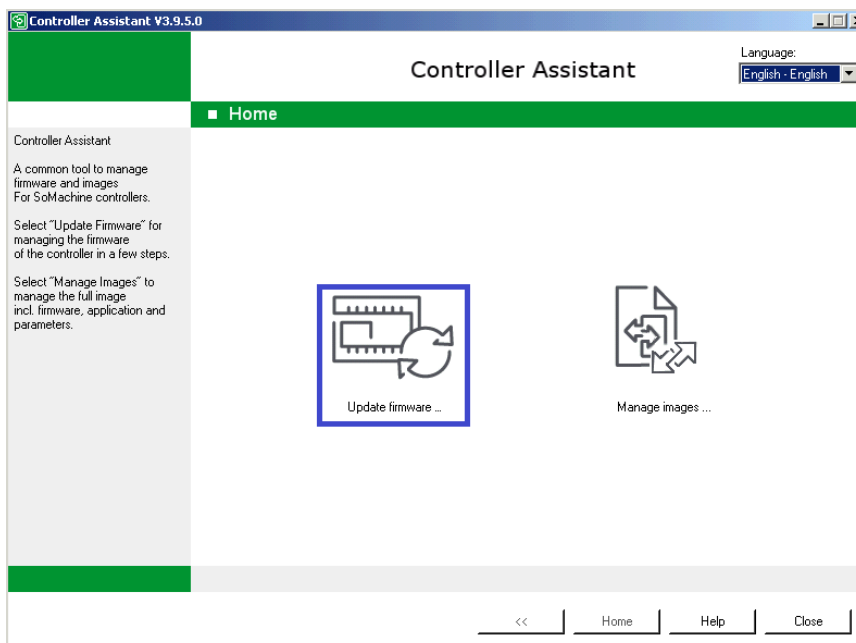
Exercise – Controller Assistant www.infopl.net

1 Download a new Firmware

- i. Open SoMachine V4
- ii. When the SoMachine Central screen appears click on **Maintenance** and select **Controller Assistant**

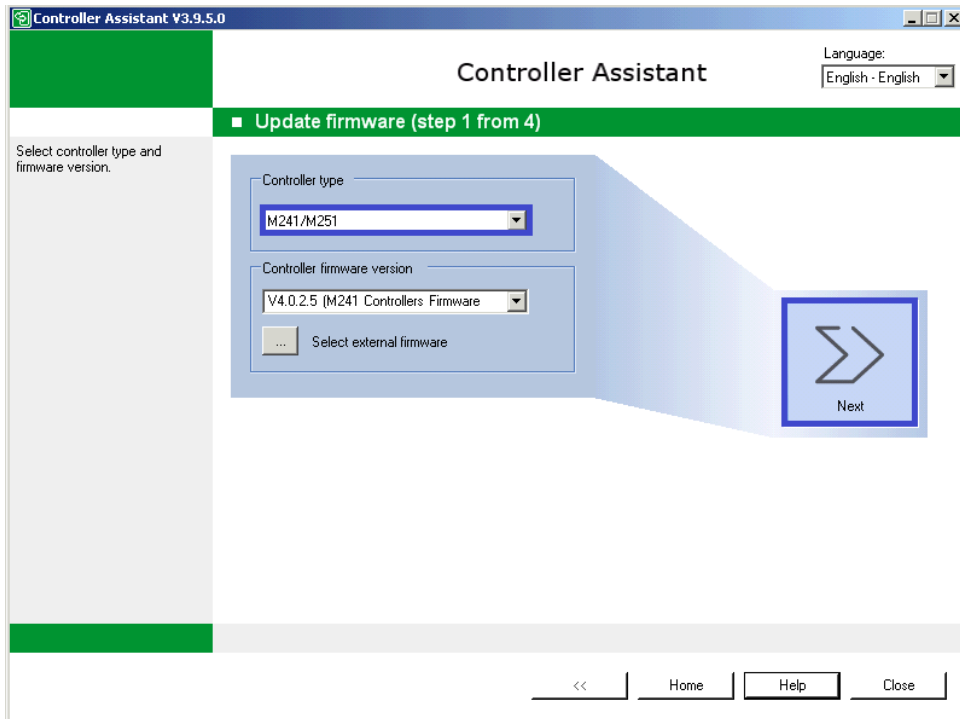


- iii. Click on **Update firmware**

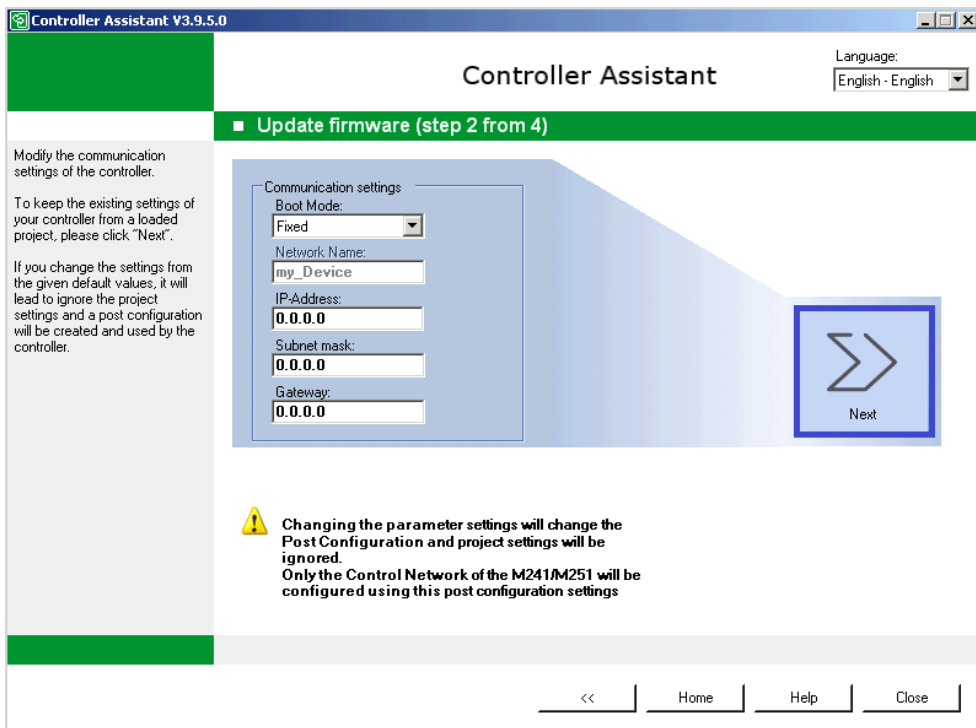


Exercise – Controller Assistant (cont.)

- iv. Select **M241/M251** in the Controller type list and the latest FW version
Click on **Next**

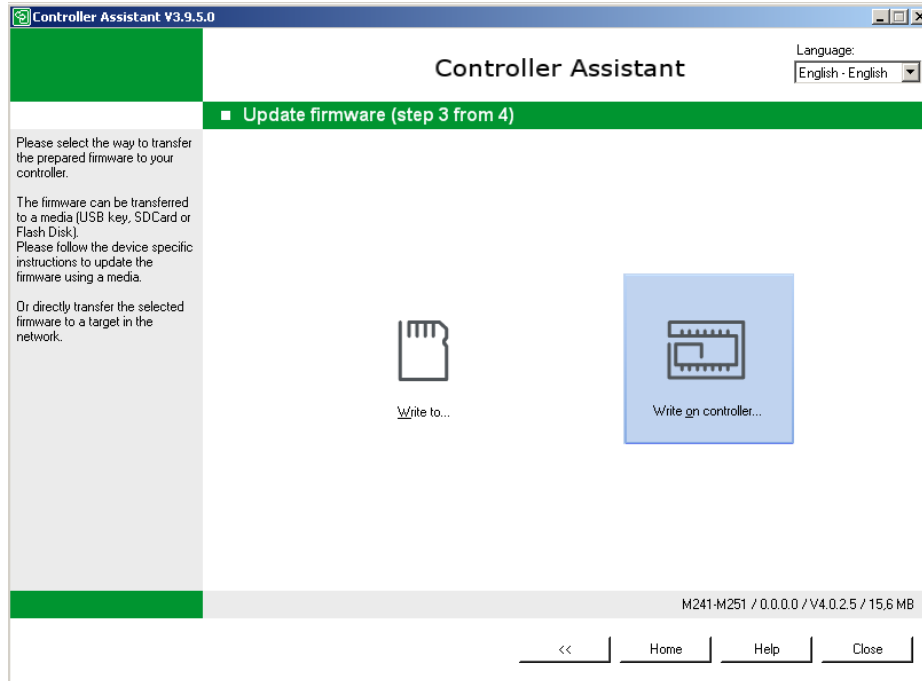


- v. Click **Next** to keep the existing Settings of your Controller

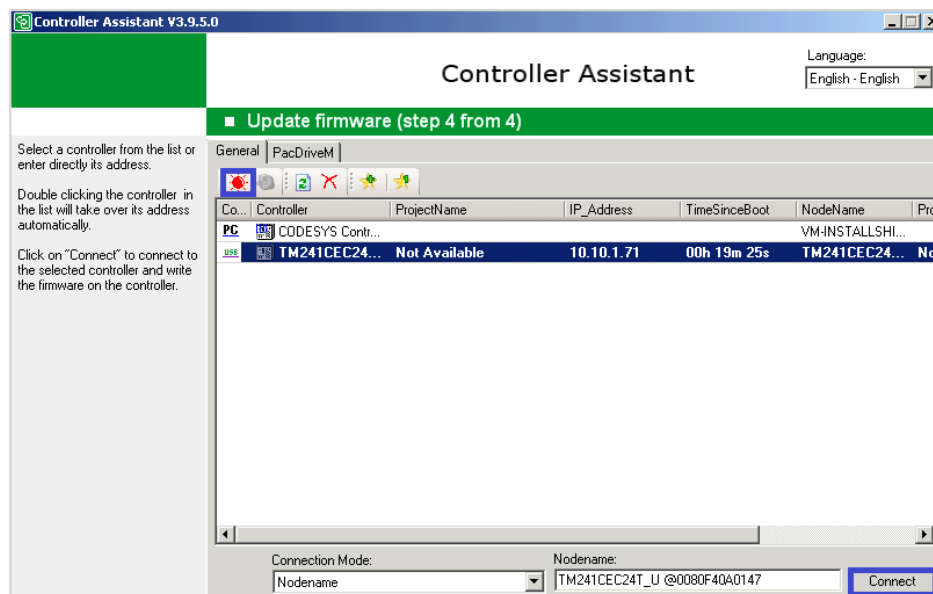


Exercise - Use the Controller Assistant (cont.)

- vi. Click on **Write on Controller** to prepare the FW image

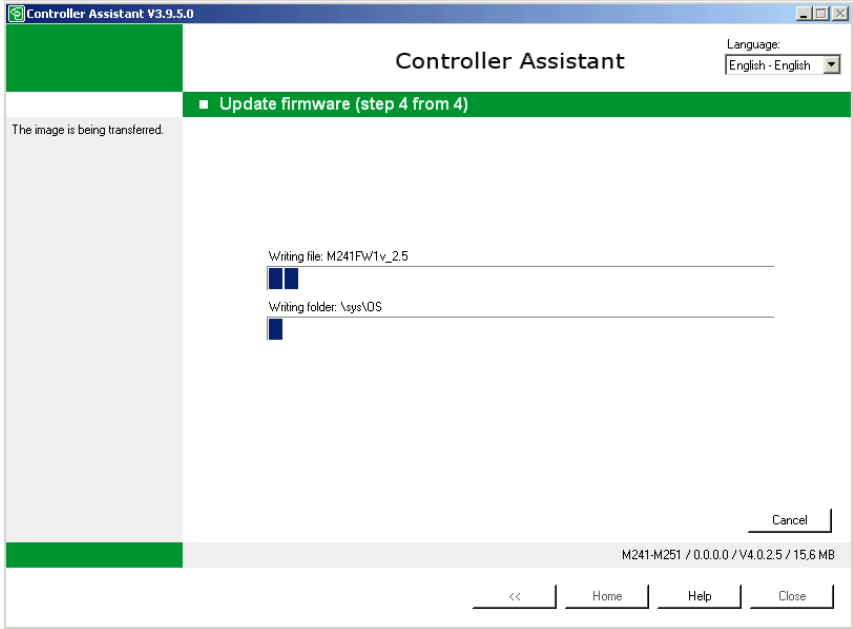


- vii. Click on **Update** to search for the M241 Controller
You can ping the Controller with **red Optical** item
Click on **Connect** to start writing the Firmware on the Controller



Exercise - Use the Controller Assistant (cont.)

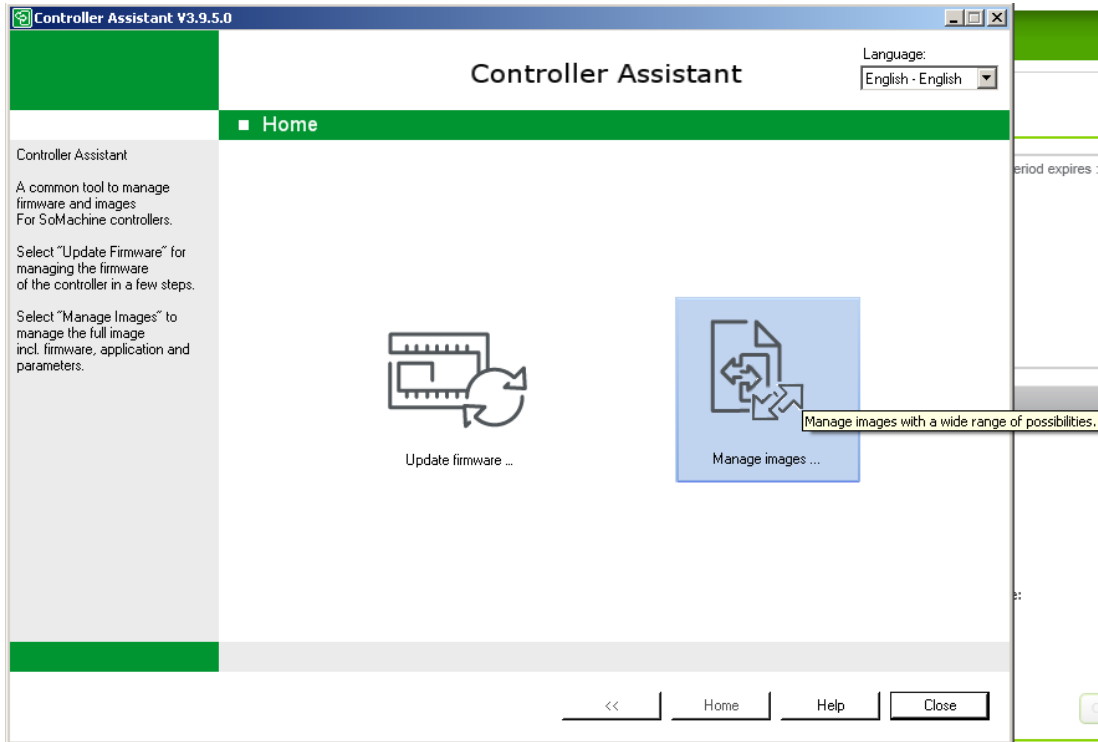
viii. The Firmware is now being transferred to the Controller.



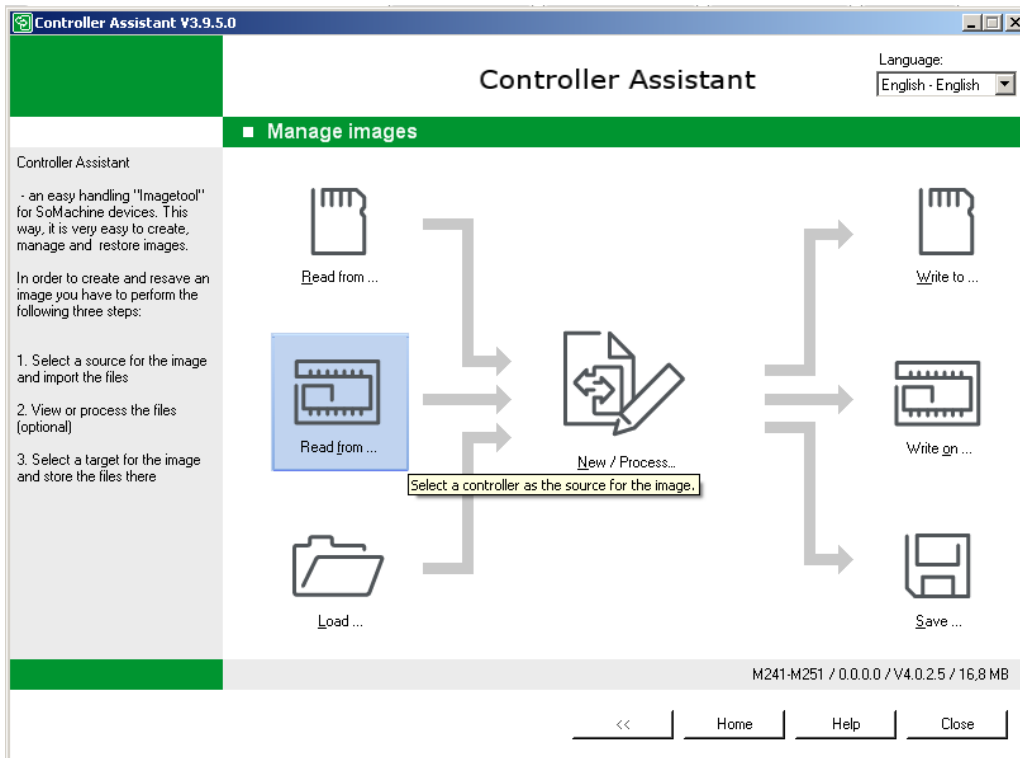
Exercise – Controller Assistant

2 Read the Actual Firmware .bpd image from the Controller

- i. Click on the **Manage images** item

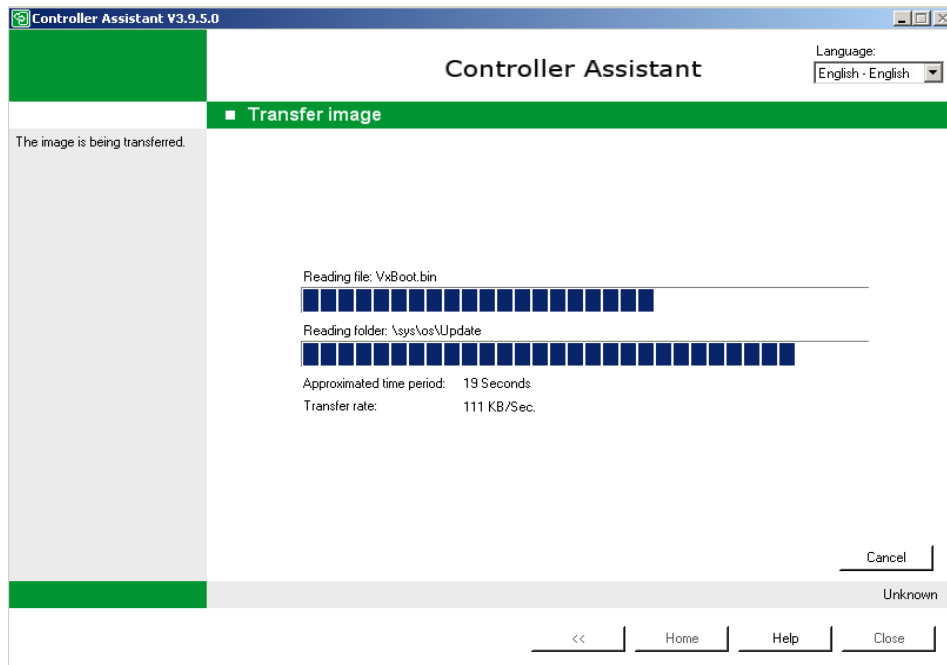


- ii. Click on **Read from Controller** to read the image from the Controller



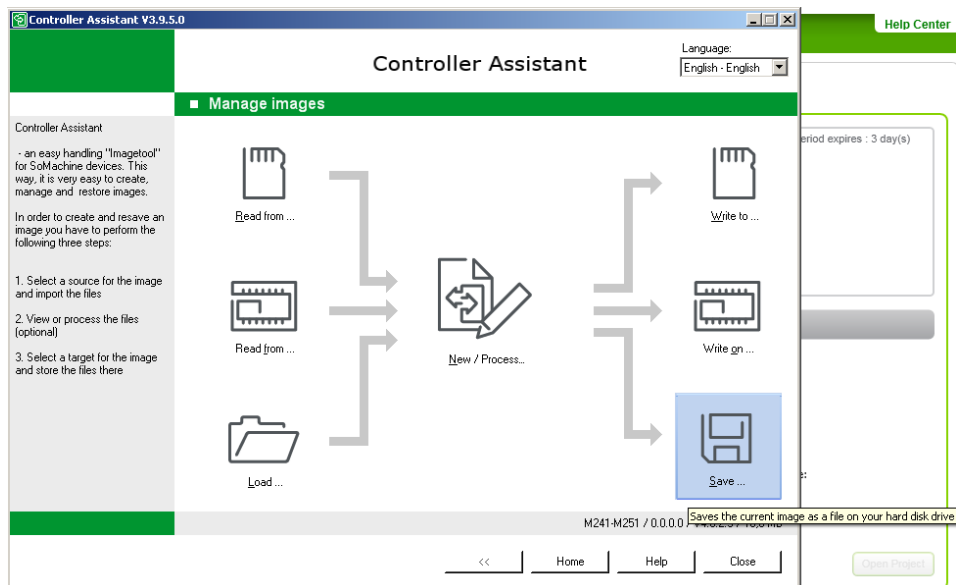
Exercise - Use the Controller Assistant (cont.)

- iii. Select the **M241** Controller in the list
Click on **Connect** to prepare the **.bpd image**



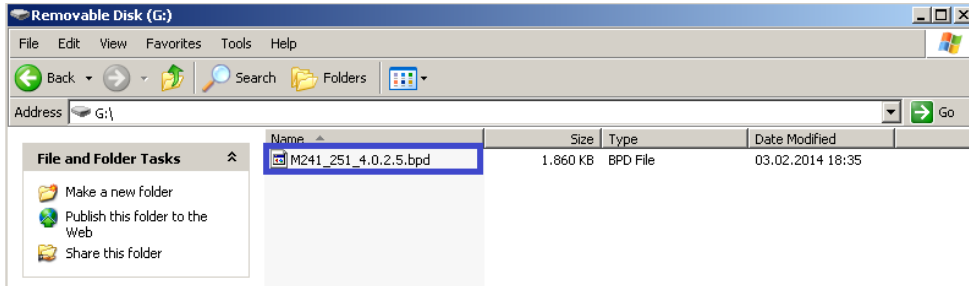
3 Save the .bpd Firmware image on your USB stick

- i. Click the **Save** item to save the current image to your USB stick



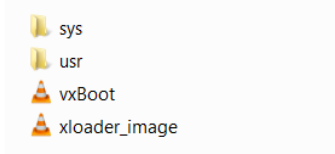
Exercise - Use the Controller Assistant (cont.)

- ii. You can reuse this **.bpd file** whenever you want with the Controller assistant with feature Read from a drive.



4 Transfer the image to your SD card

- i. Click the **Write to** item to write the current image to your SD card
Search for your **SD card** and click on **Write**
/!\ This operation will erase all the content of your SD card



You have now both folder **Usr** and **Sys** and both files **vxBoot** and **xloader_image** on your SD card.

Now, you can manually download the Firmware to the Controller by inserting the SD card in the Controller slot.

5 Transfer the image to the Controller M241

- i. Click on **Write to**
- ii. Select the **M241** in the list and Click on **Connect** to download the FW

