

LISTEN.
THINK.
SOLVE.®

RSLogix™ 5000 Design and Configuration Software

What's New in V20

Agenda

1. RSLogix 5000 V20 Preview

2. Expanded Scalability

3. Broader Device Integration

4. Enhanced Safety Features

5. Integrated Motion on EtherNet/IP

6. Other

Agenda

1. RSLogix 5000 V20 Preview

RSLogix 5000 V20 Preview

Expanded Scalability

Support for a broader range of controllers, I/O, and drives provides best-fit alternatives for a wider variety of applications

- ControlLogix 5570 L71, L73XT, L72S, L73S
- CompactLogix 5370 L1, L2, L3
- Kinetix 350

Broader Device Integration

Reduce downtime, improve speed of application development, and connect to a wider variety of devices

- Large Device Auto Device Configuration
- EDS Add-on Profiles
- EtherNet/IP Quick Connect
- Open Socket interface support for 1756-EN2x family
- Security Extensions
- Module Discovery

RSLogix 5000 V20 Preview

Integrated Motion on EtherNet/IP

Advanced motion functions for a broader spectrum of applications

- Master Driven Speed Control (MDSC)
- Acceleration compensation for interpolated actual position

Enhanced Safety Features

New safety components and programming features extend the performance of the 5570 family of controllers into safety-related applications

- Floating Point in Safety Task
- EtherNet/IP Unicast Safety I/O
- Safety Instruction additions

New Profiles

- 1794 Flex on EtherNet/IP with DLR
- Armorstart on EtherNet/IP with DLR
- Motor Protection EtherNet/IP Adaptor
- SLC-500 EtherNet/IP Adapter
- Kinetix 350 EtherNet/IP CIP Motion
- Kinetix Integrated Drive Motor – SERCOS interface

Agenda

1. RSLogix 5000 V20 Preview

2. Expanded Scalability

Expanded Scalability

ControlLogix 5570 PACs

- 1756-L71 (2MB)
- 1756-L73XT (8MB)
- 1756-L72S (GuardLogix)
- 1756-L73S (GuardLogix)



Other Safety Hardware

- PointGuard Analog Input Module



The performance of the 5570 controllers extended to safety applications and hazardous environments

Expanded Scalability

CompactLogix 5370 PACs

- 1769-L1 (3 new controllers)
 - Profile [1769-PP012A-EN-E](#)
- 1769-L2 (3 new controllers)
 - Profile [1769-PP011A-EN-E](#)
- 1769-L3 (6 new controllers)
 - Profile [1769-PP010A-EN-E](#)



Kinetix 350

- 12 catalog numbers
 - Profile [2097-PP002A-EN-P](#)



High performance, scalable motion solution at a lower acquisition cost for value-driven applications

CompactLogix 5370 PACs: Expanding the Scalability of Logix Controllers



The CompactLogix 5370 PACs offer:

- A wider variety of options to provide best-fit alternatives for specific application requirements
- A strong motion solution when combined with Kinetix® 350 for customers requiring high performance in a compact and affordable package
- Common and consistent features across all three platforms; scalability between the Logix families

Agenda

1. RSLogix 5000 V20 Preview

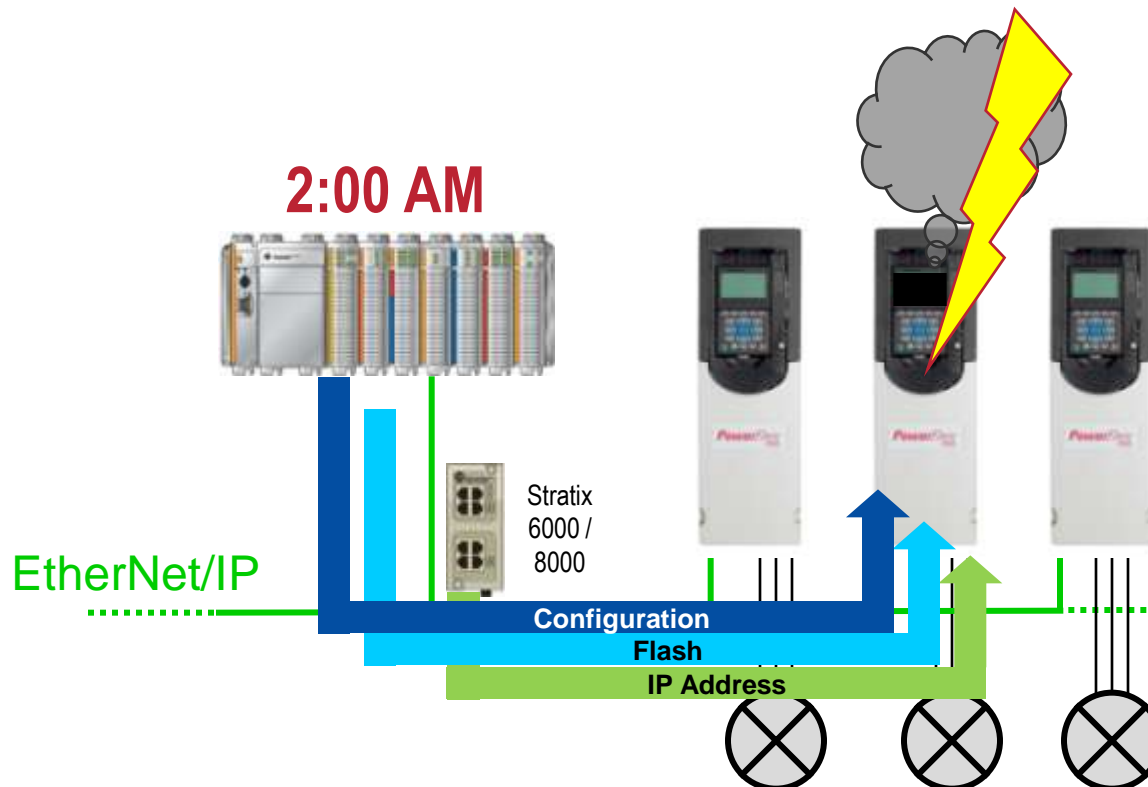
2. Expanded Scalability

3. Broader Device Integration

Automatic Device Configuration (ADC)

Reduce Downtime when Replacing a Drive

- Configure your Logix system to automatically download a PowerFlex 755 drive configuration after it has been replaced
 - Configuration data exists in the ACD file and the Logix controller, but the download was a manual process in RSLogix 5000 v16-v19
- Works with Firmware Supervisor which flashes the drive and/or peripherals for the application



Add-on Profile (AOP) Expansion

More Choices for Integrated EtherNet/IP Devices

- Addition of Electronic Data Sheet AOPs makes integration of EtherNet/IP devices easier than ever before
- Use text-based Electronic Data Sheets
- Add devices directly from RSLogix 5000 design environment
- Provides configuration, connection information, I/O tags, and configuration screens, other pre-defined tabs

The EDS Wizard allows you to:

- register EDS-based devices.
- un-register a device.
- change the graphic images associated with a device.
- create an EDS file from an unknown device.
- upload EDS file(s) stored in a device.

To continue click Next

Select Module Type

Module Type Category Filter	Module Type Vendor Filter
AC Drive Device	Allen Bradley
Communication	BALLUFF
Communications Adapter	Delta Computer Systems, Inc.
Controller	Endress+Hauser
Power	Rockwell Automation

Editing Number	Description	Vendor	Category
8067_0010_0001	CRUISER DU002073	SHC Corporation	Pneumatic Valves
3000_000C_0008	T37000EXP-SCA	Mohr Incorporated	Communications Ac-
3050_000C_0000	Amibus Communicator - Slave	HMS Industrial	Communications Ac-
8138_000E_0004	SEW-USA/EURO/DRE308	SEW Eurodrive	Unknown Device T
840E_000E_7205	Transact 03	Endress+Hauser	Generic Device/De
8700_002R_0001	Test Product 01	Test Vendor 2011	Generic Device/De
8700_002R_0002	Test Product 02	Test Vendor 2011	Generic Device/De

137 of 137 Module Types Found

New Module

Name	Requested Packet Interval (RTI) (ms)	Input Type	Input Trigger	
Producing-Current, Encoder Position Value	10.0	11.0 - 3200.0	Unicast	Cyclic
Input Only, Encoder Position value + Velocity	10.0	11.0 - 3200.0	Unicast	Cyclic

Encompass Partner Add-on Profiles now Installed with RSLogix 5000

Encompass Partner Devices Easy to Find and Configure

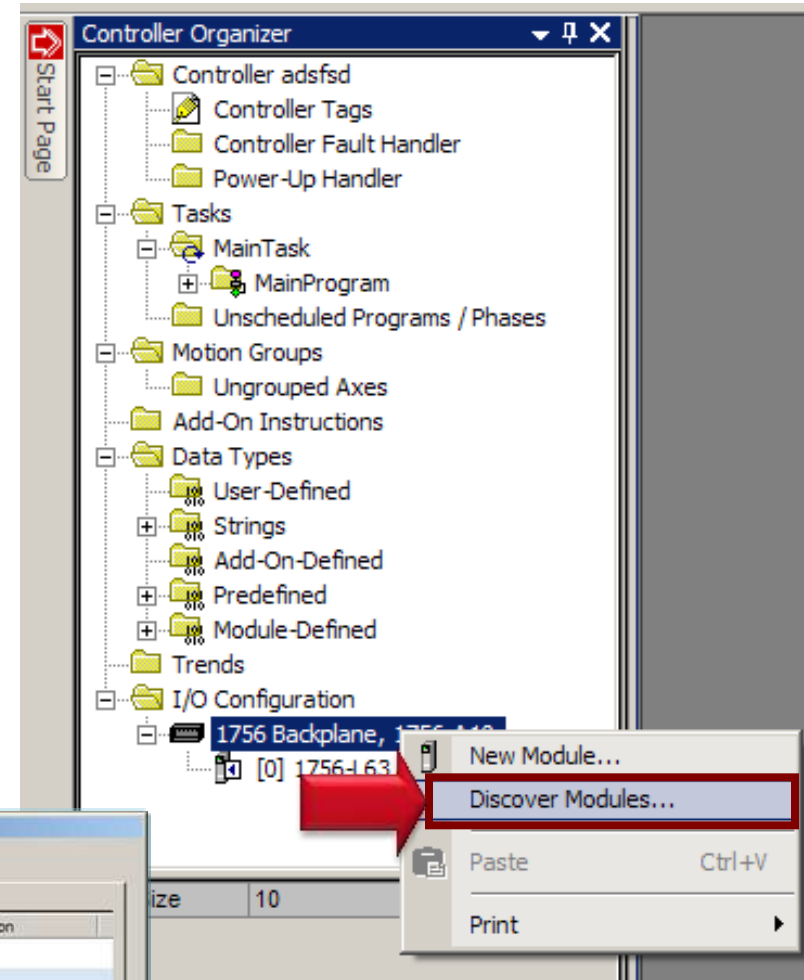
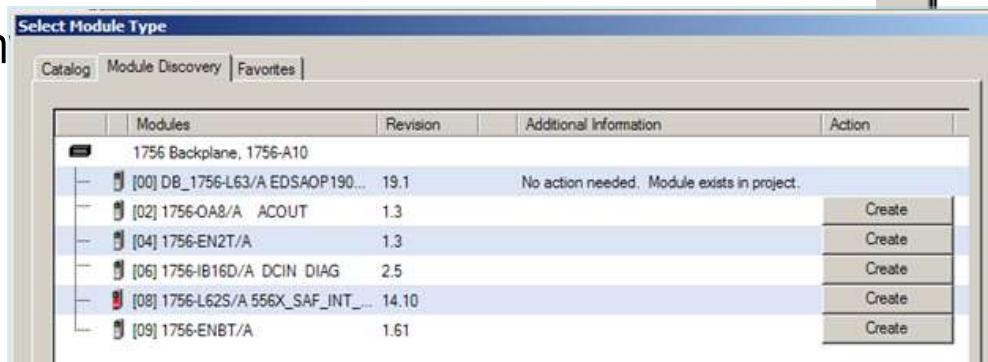
- No separate step for installation
 - installed automatically at the same time as Rockwell Automations AOPs
- Easier to find
 - Encompass Partner AOPs show in the same Module Select Dialog as RA devices
- Easier for users
 - no need to download & install separate AOPs from Encompass Partner web sites



Device Discovery

Improve Speed of Application Development

- Online browse of backplanes and networks for devices
- Supports virtually all devices that can be added online*
- Improves accuracy of building the I/O tree
- Easily add devices to the I/O tree without needing:
 - exact catalog number
 - slot # or address
 - firm

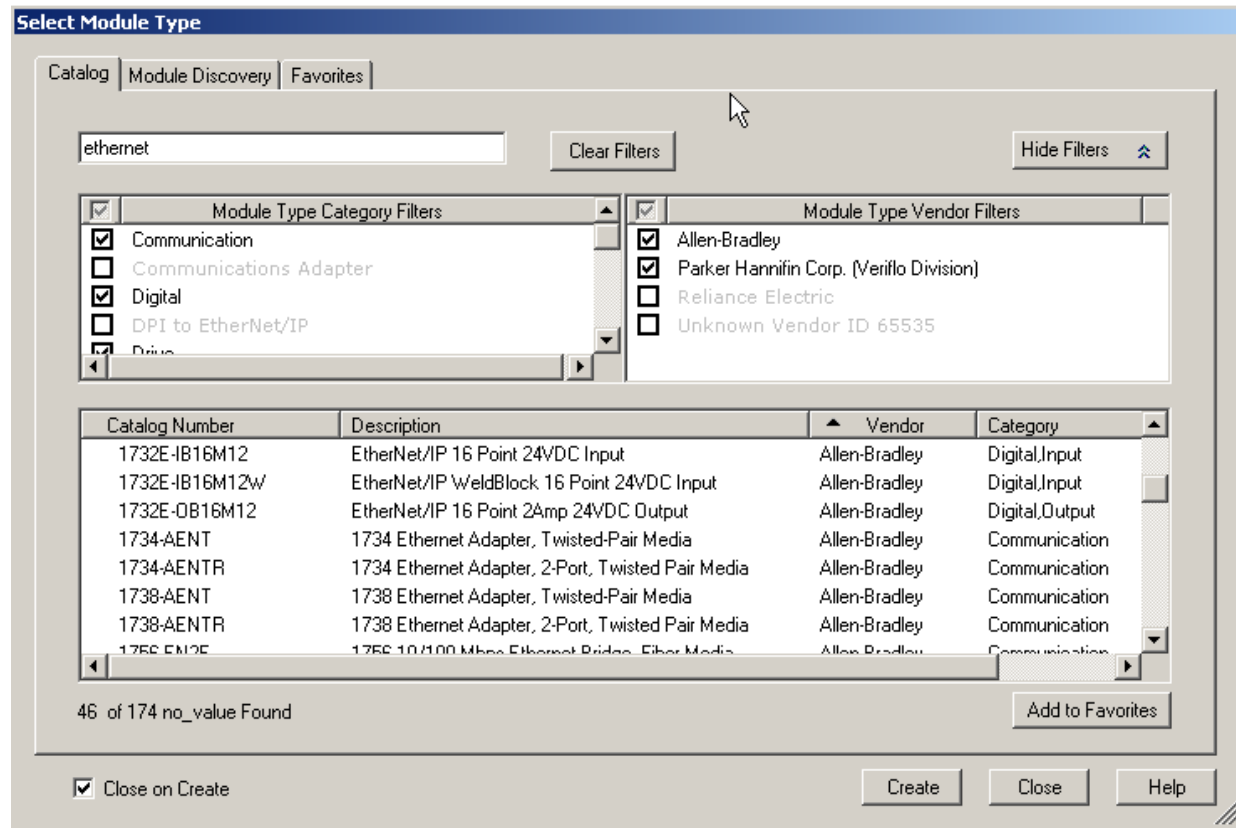


*exception - CompactLogix not supported in v20

Finding/Adding Devices to the Logix tree

Improve User Experience and Speed of Application Development

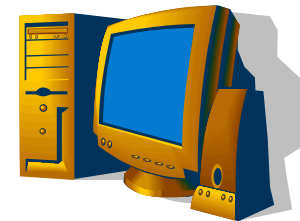
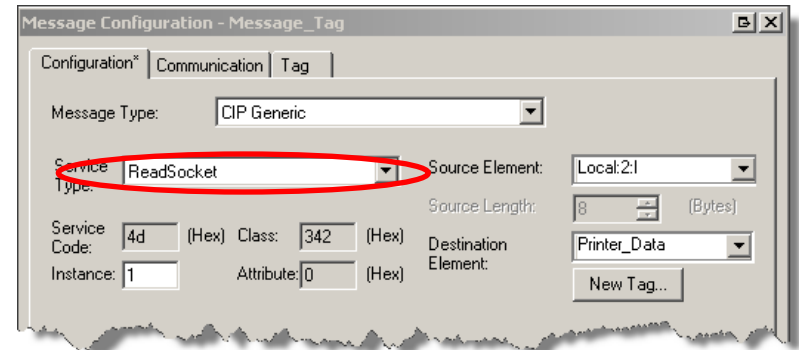
- More efficient to locate and select modules to add to Logix project
- All registered devices now shown in Select Module Dialog
- Improved user experience
 - New String Filtering
 - New Wildcard Search
 - New Favorites
 - New Category Filters



Socket Connections

Connect Even More Devices to Integrated Architecture

- Allows Logix connection to non-CIP devices
- Barcode scanners, vision systems, printers, robots, competitive controllers, databases, and more
- Socket-specific messaging available in RSLogix 5000
- Supported in:
 - 1756-EWEB and 1768-EWEB
 - CompactLogix 5370 L1, L2, L3
 - 1756-EN2x and 1756-EN3TR



Non-Windows Based Workstations



Robots



Scanners



Any Standard Ethernet Devices

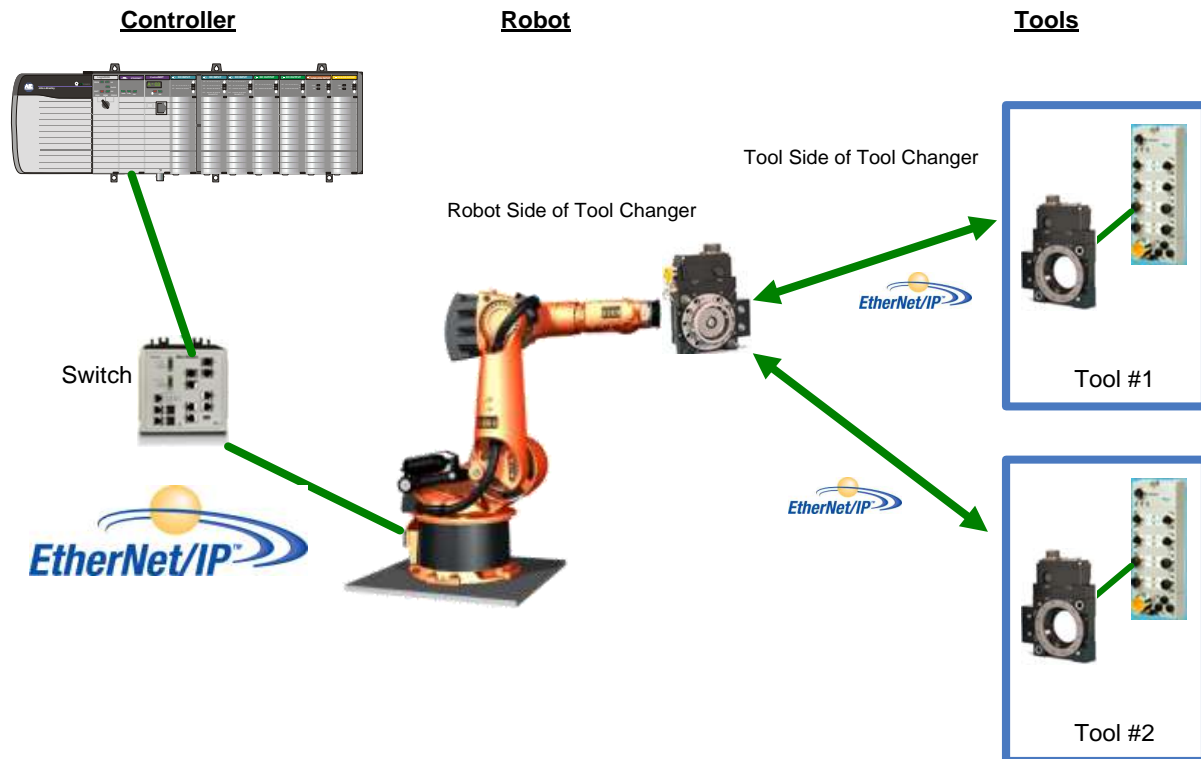


Printers

Quick Connect on EtherNet/IP

Improve Machine Cycle Time by Reducing Time for Tool Changes

- Enable EtherNet/IP devices to quickly power up
- Previously only offered via DeviceNet
- Now expanded to EtherNet/IP
- Often used in Automotive applications where a robot arm is required to "change tool" on the fly to switch task
- 500ms Quick Connect timing to complete power-up process and start to communication and control I/O



Agenda

1. RSLogix 5000 V20 Preview

2. Expanded Scalability

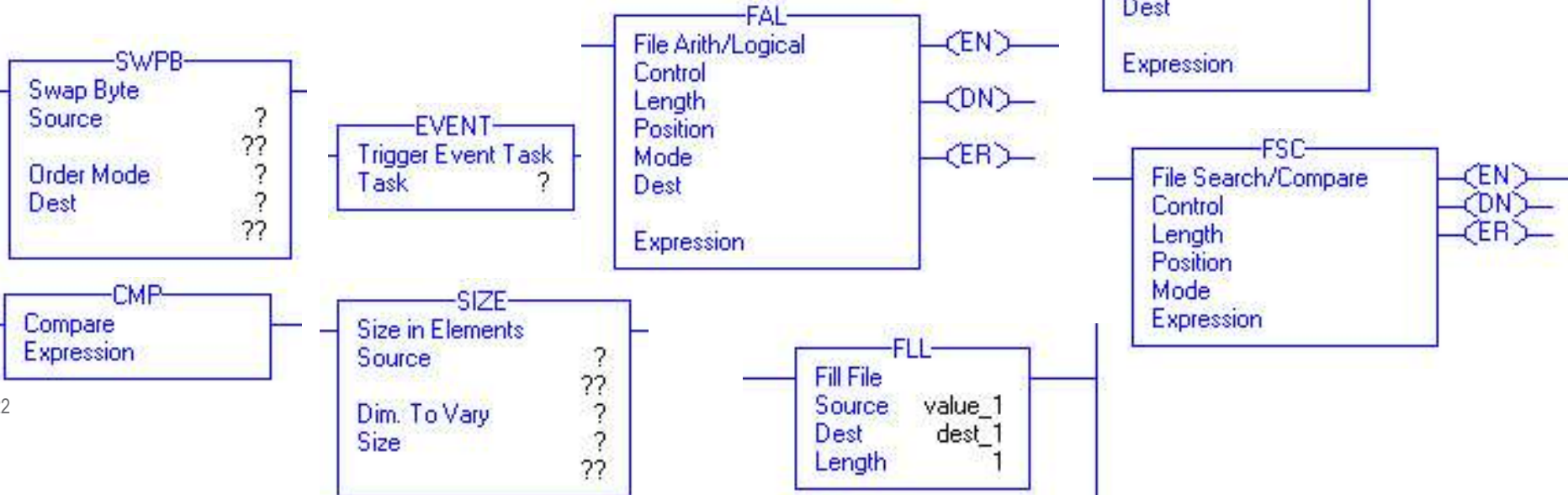
3. Broader Device Integration

4. Enhanced Safety Features

Performance of ControlLogix 5570 PACs now Expanded to Safety Applications

Safety Enhancements

- GuardLogix 5572S and 5573S PACs
- Safety I/O Unicast
- PointGuard Analog Input Module
- Safety Analog input instruction (SIL 3 Certified)
- Floating Point Safety Data
- Certified Burner Management Instructions (planned)
- Additional Ladder Safety Instructions



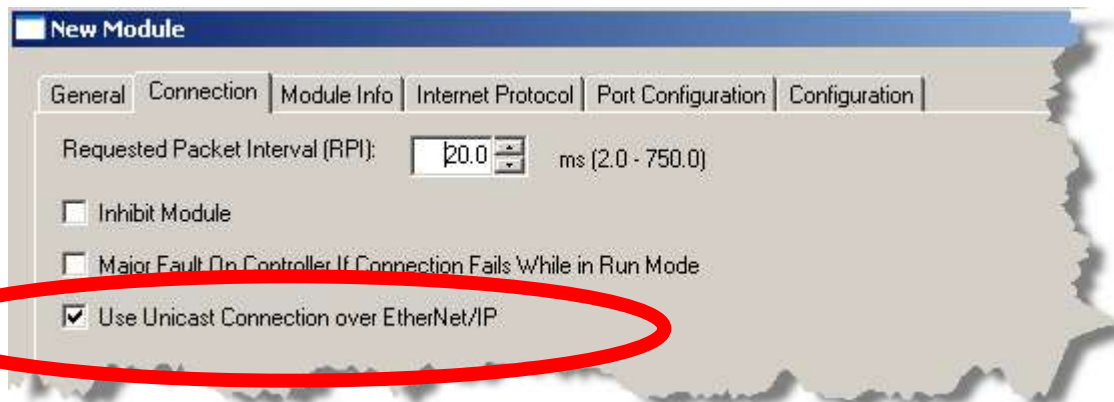
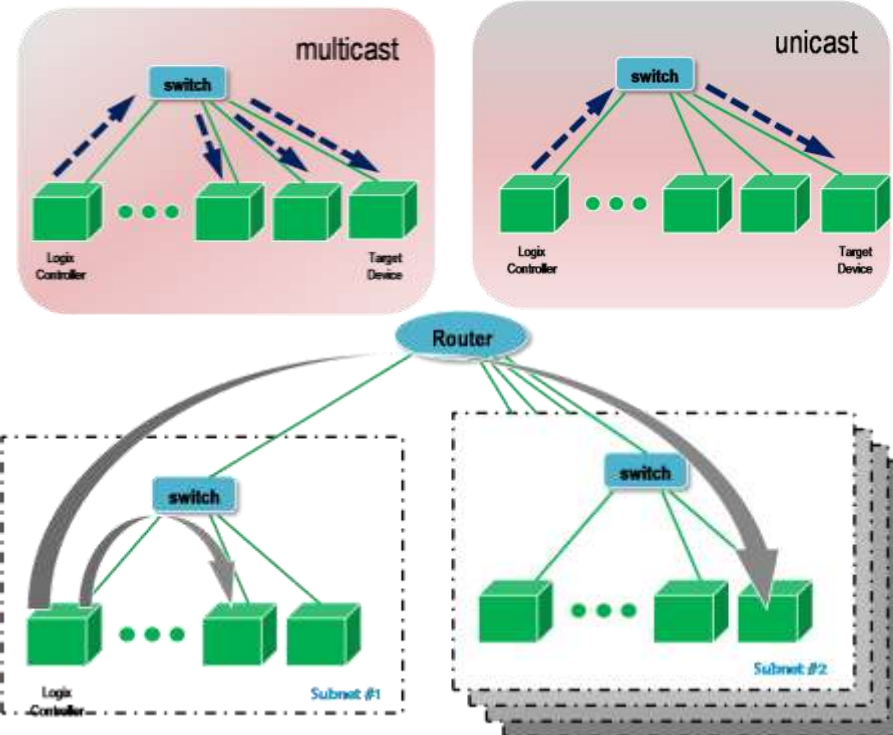
More Efficient Communications Extended to Safety I/O

Logix PACs communicate to other EtherNet/IP devices via Unicast

- Offers more IT-friendly communication method
- Standard I/O in V18
- Standard produced/consumed tags in V18
- Safety Produced/Consumed tags in V19
- **Safety I/O in V20**

Allow communications to span multiple VLANs or subnets

- Example application includes interlocking of remote controllers over plant infrastructure



GuardLogix SIL3 Analog

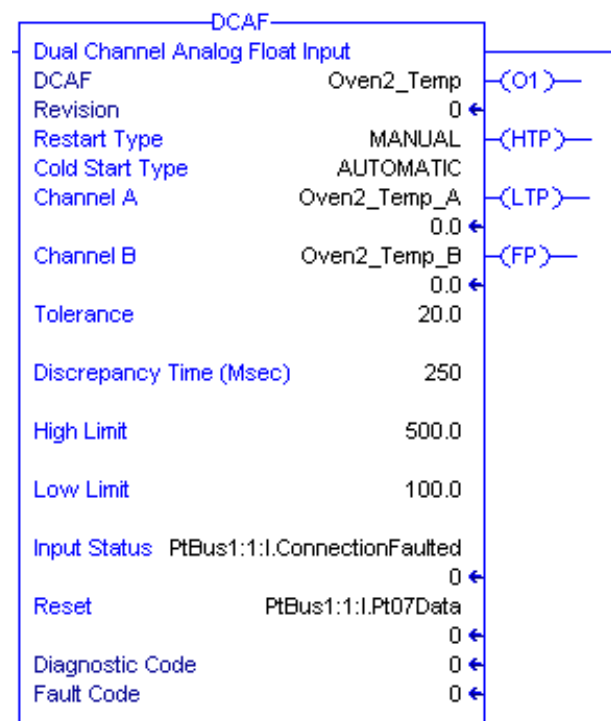
PointGuard SIL 3 Analog Input Module

- SIL3 rated analog input module for Point I/O
- 4 channels
- Accepts 10V and 0-20mA / 4-20mA signals
- 12 bit resolution
- Provides fresh analog data in under 50ms
- Single Channel & Dual Channel
- Supports 2, 3, and 4 wire sensors



Certified SIL 3 Analog Input Instruction

- Integer instruction, DCA
- Floating Point instruction, DCAF



Agenda

1. RSLogix 5000 V20 Preview

2. Expanded Scalability

3. Broader Device Integration

4. Enhanced Safety Features

5. Integrated Motion on EtherNet/IP

Master Driven Speed Control (MDSC)

Simplify Development of More Complex Motion Applications

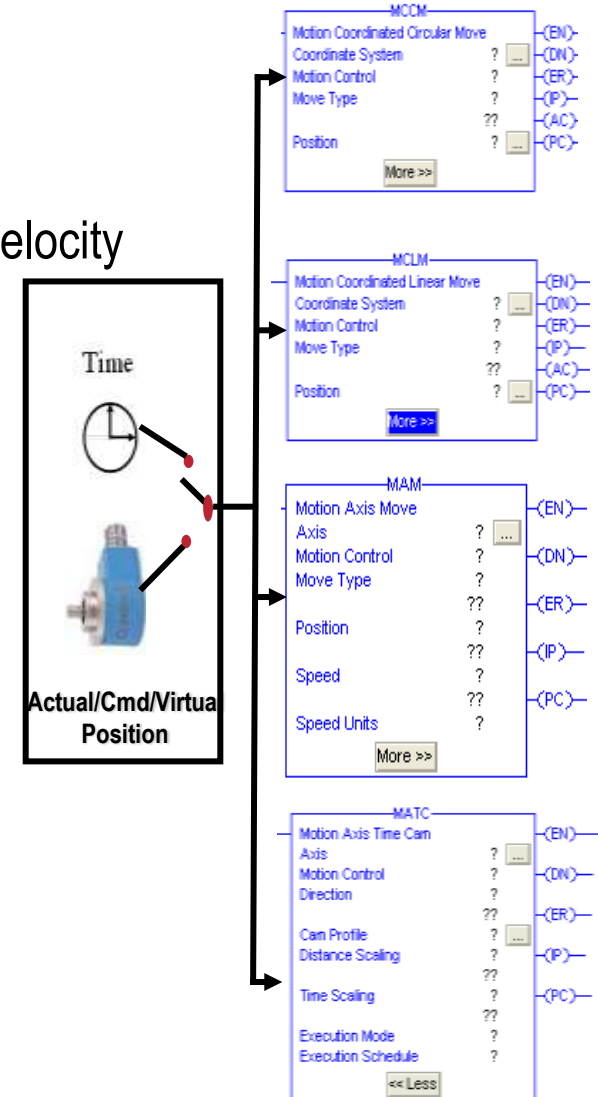
- Achieve higher machine performance
- Solve complex applications such as packaging, converting, assembly
- Time-based moves can be driven by a master axis position/velocity

Reduce development and commissioning time

- Axis position drives motion time-based moves
- Use with MAM, MAJ, MATC, MCLM, MCCM

	CAM instructions	Single axis motion	Coordinated motion
Time driven	MATC	MAM, MAJ	MCLM, MCCM
External input	MAPC MATC	MAM, MAJ	MCLM, MCCM

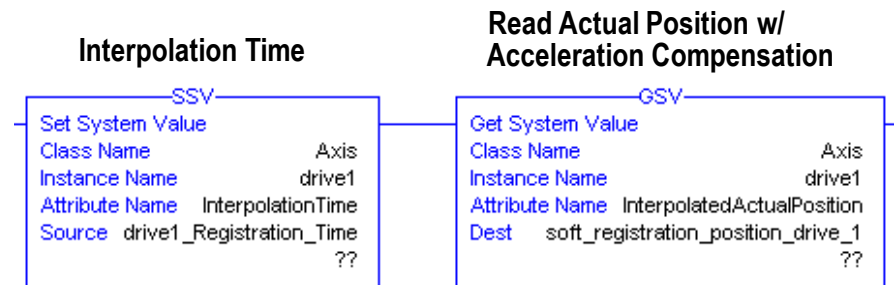
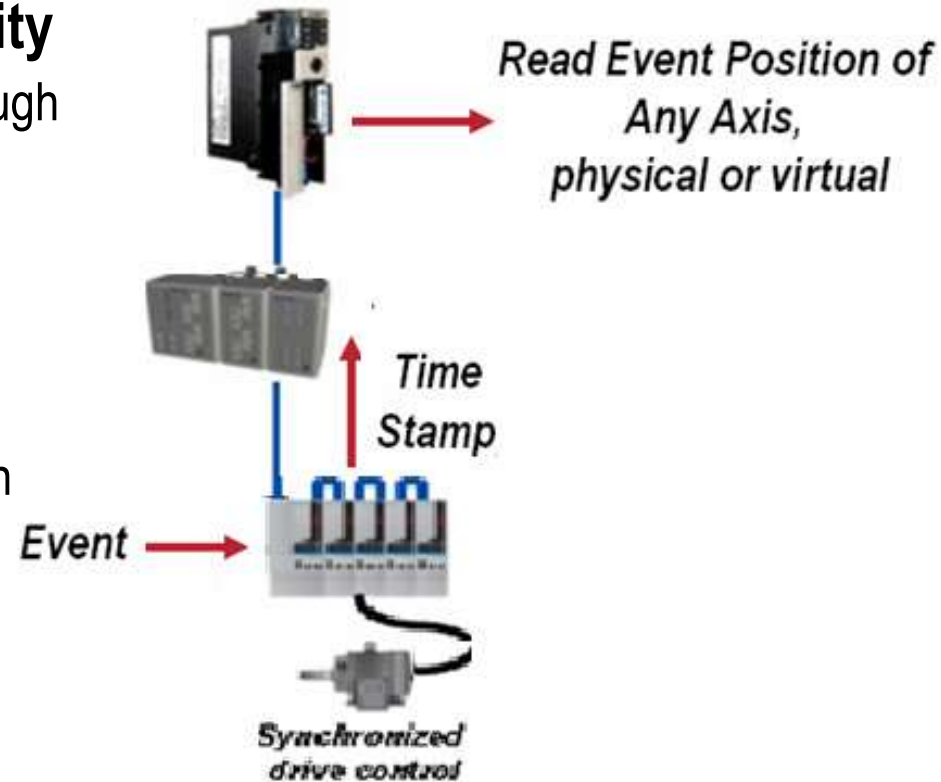
Using MDSC



Interpolated Actual Position Acceleration Compensation

Provide Maximum Machine Flexibility

- Provides global machine registration through one input point
- Eliminates need for costly, standalone hardware solutions
- Apply acceleration compensation when reading interpolated actual position
- Improves accuracy of interpolated position by accounting for axis acceleration
- Useful for any application that uses registration timestamps to determine axis position
 - Drive registration inputs
 - 1756-SOE module inputs



Agenda

1. RSLogix 5000 V20 Preview

2. Expanded Scalability

3. Broader Device Integration

4. Enhanced Safety Features

5. Integrated Motion on EtherNet/IP

6. Other

High Availability Recent Additions

2x Performance Increase

⇒ 5570 support can reduce scan time by 2x over 5560 controllers

EtherNet/IP I/O

⇒ Common network backbone for redundant architectures reduces development time

DLR Network

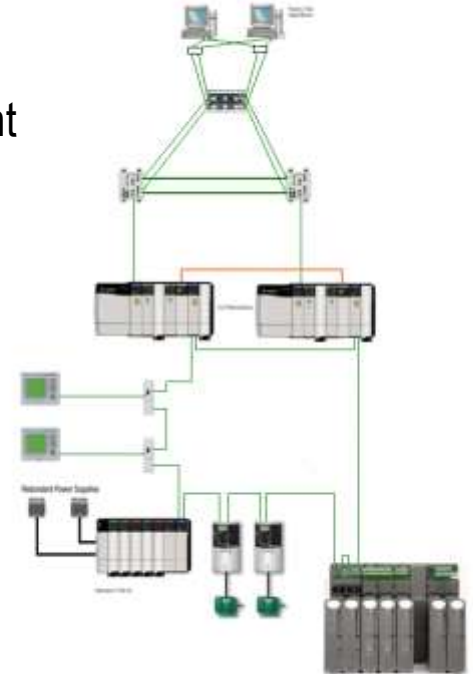
⇒ Device Level Ring for no single point of media failure

1715 Redundant I/O

⇒ Unmatched ease of use for Redundant I/O requirements

FactoryTalk View SE 6.0

⇒ Native support for Alarms and Events



What's Next ? V20.50 Logix Redundancy

- Includes V20 features
- Adds SIL2 for the L7 controllers
- Adds EN2F support
- HMI "Blind time" reduction
- Adds Socket support in Redundancy

New Profiles Added to RSLogix 5000 V20



Flex I/O
EIP w/DLR



AarmorStart
EIP w/DLR



SLC EtherNet/IP Adaptor



Kinetix 350
EtherNet/IP CIP
Motion



Motor Protection
EtherNet/IP Adaptor
w/ DLR

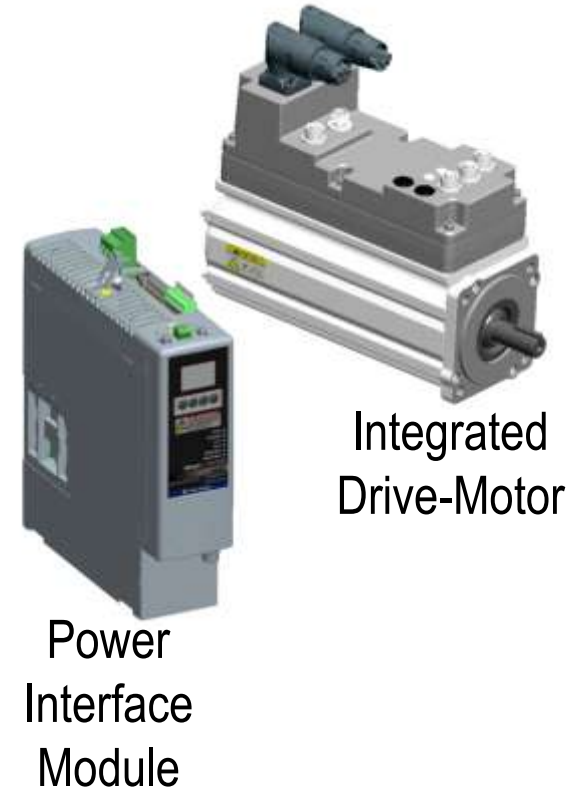


Kinetix Integrated Drive Motor
(Sercos Interface)

Kinetix 6000M Integrated Drive-Motor System

Combines the high-performance MP-Series™ food-grade servo motor and Kinetix® 6000 servo drive technologies into a single, compact package

- Compatible with Kinetix 6000 and Kinetix 6200
- Reduces the panel space required for each servo axis
- Reduces the time needed to wire each servo axis
- Reduces the time to add or remove servo axes
- Minimizes the cabling required for each servo axis
- IP67 Food grade design



Task Monitor Tool V3.0

Improve Troubleshooting and Easily Evaluate Controller Resources

New version merges RSLogix 5000 task monitor tool and Logix Diagnostics Tool and adds additional functionality

- Graphical representation of data
- Direct correlation of machine events to controller performance
- More network diagnostics
- New communication and connection diagnostics

