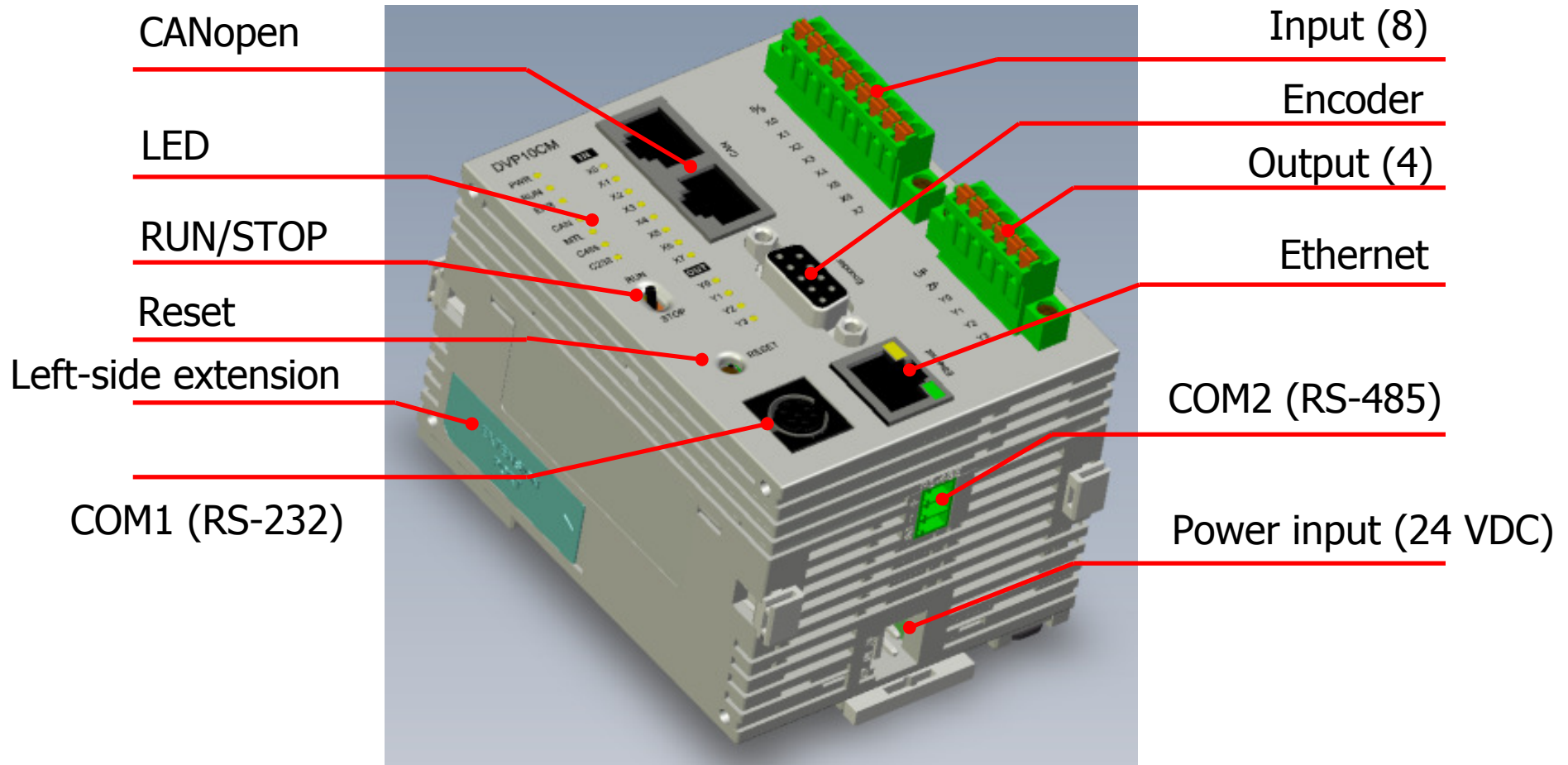




DVP-10MC





DVP-10MC CANopen based Motion Controller

Advanced motion control functions:

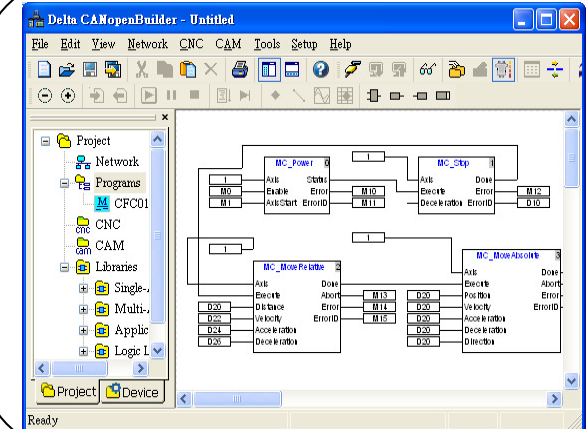
- Supports single-axis, multi-axis motion control commands; complies with PLCopen standard
- Supports electronic cam, electronic gear, rotary cutting and flying shear
- Supports CNC, G-Code can be dynamically or statically executed.
- Built-in with an encoder port; supports differential input of max. 250 kHz
- The host software supports motion networks, motion programs, logical programs, electronic cam, editing/download of G-Code and device monitoring.



High-speed bus system:

- The max. CANopen communication between DVP-10MC and servo drive can be 1M bps.
- Supports high-speed Ethernet transmission at 100M bps

User-friendly interface:



Big capacity:

- Controls max. 16 axes; built-in virtual axes
- Max. 480 I/O points
- Supports advanced left-side modules