



Perfection in Automation



Power Panel





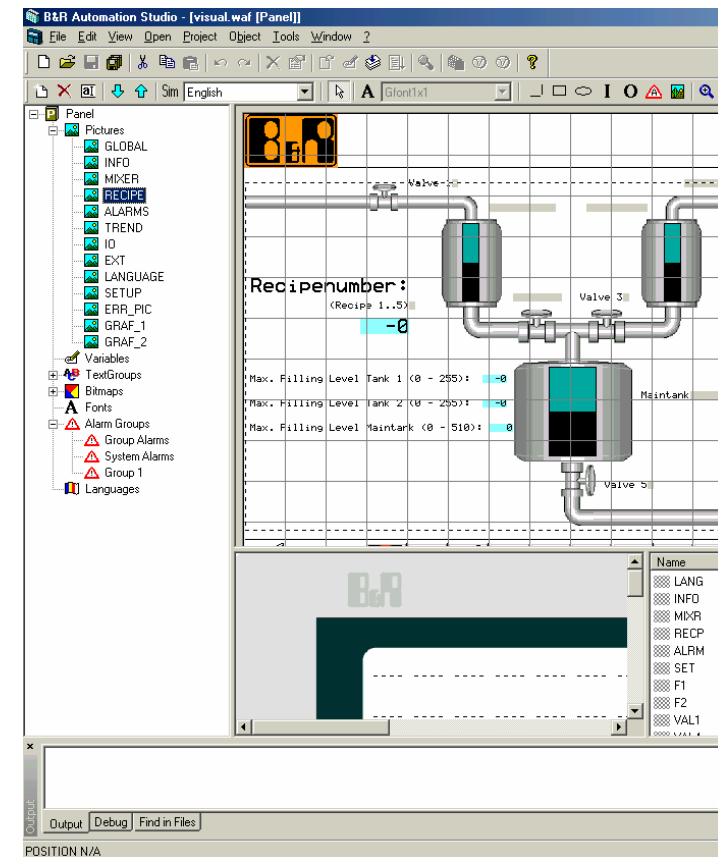
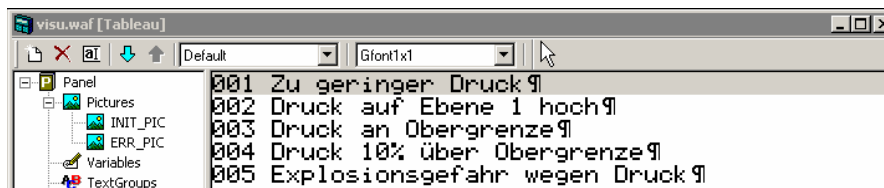
- **Control, motion, operator interface and communication in a single device**
 - Control with real-time behavior
 - Powerful, integrated visualization
 - Fast I/O connection
 - Modularly expandable
 - Integrated drive technology



Power Panel Configuration



- **Can be seamlessly configured using Automation Studio™**
 - Online language switching
 - Alarm system
 - Recipe management
 - Operation with touch screen and/or function keys
 - Free programming of the display
 - Fast page changing
 - Direct access to I/O and variables
 - Teleservicing of the entire system
 - Number of pictures and languages is limited only by the size of memory



Power Panel Product Overview



Perfection in Automation



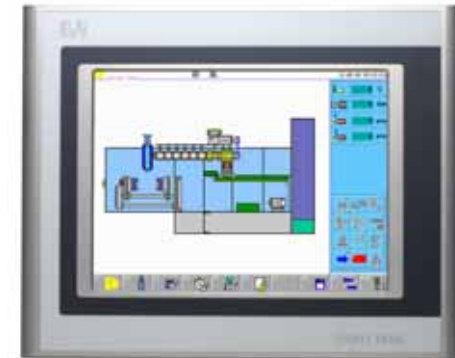
PP15



PP21



PP41



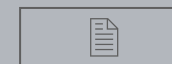
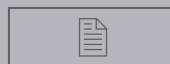
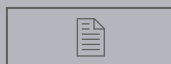
Power Panel 100 / 200

Power Panel PP15 / PP21 / PP41

Product Overview



- **Control**
 - Integrated I/O
 - RS232 interface
 - CAN bus interface
- **Visualization**
 - PP15: LC display with 4 x 20 characters
 - PP21: LC display with 4 x 20 characters
 - PP41: LC display QVGA b/w



Power Panel 100 / 200

Display Types



- **PP120 / PP220**
- **Displays**
 - 5.7" LCD b/w QVGA; 8 shades of gray
 - 5.7" LCD color QVGA; 256 colors
 - 10.4" TFT color VGA; 256 colors
 - 15" TFT color XGA; 256 colors
- **Analog resistive touch screen**



Back 5.7"

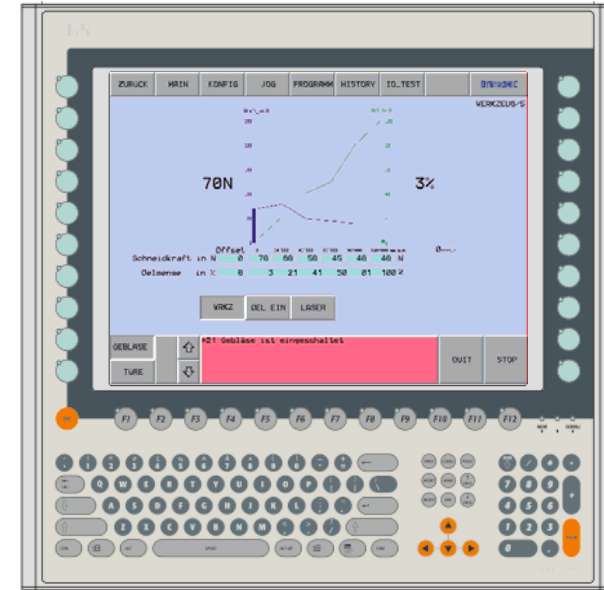
Back 10,4"

Back 15"

Power Panel 100 / 200 Display Types



- **PP151 / PP251**
- **Displays**
 - 5.7" LCD b/w QVGA; 8 shades of gray
 - 5.7" LCD color QVGA; 256 colors
 - 10.4" TFT color VGA; 256 colors
 - 15" TFT color XGA; 256 colors
- **Function keys**
- **Softkeys**
- **Number keys**

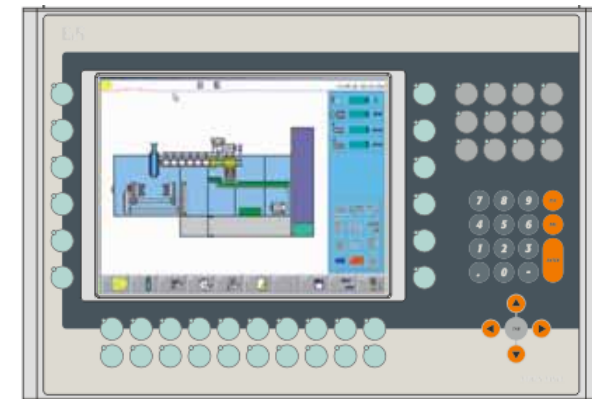


Power Panel 100 / 200

Display Types



- **PP152 / PP252**
- **Displays**
 - 5.7" LCD b/w QVGA; 8 shades of gray
 - 5.7" LCD color QVGA; 256 colors
 - 10.4" TFT color VGA; 256 colors
- **Function keys**
- **Softkeys**
- **Number keys**

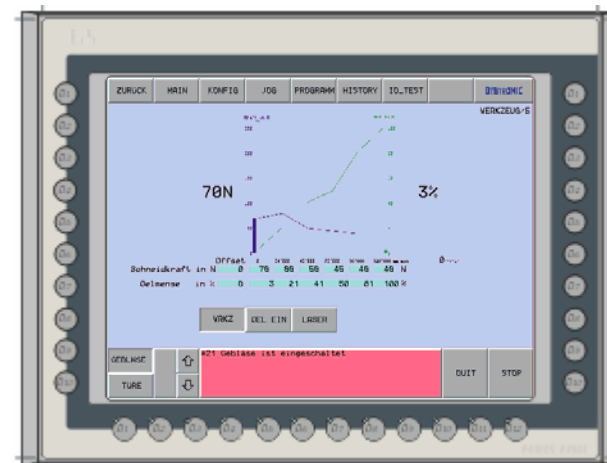


Power Panel 100 / 200

Display Types



- **PP280**
- **Displays**
 - 10.4" TFT color VGA; 256 colors
 - 15" TFT color XGA; 256 colors
- **Function keys**
- **Touch screen**

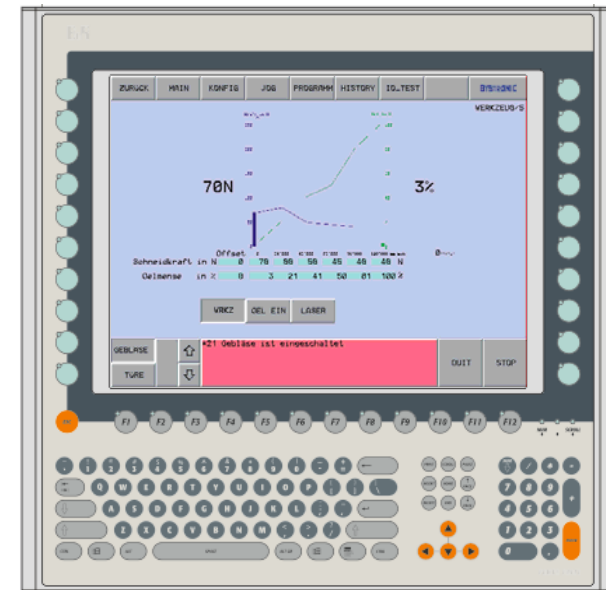


Power Panel 100 / 200

Display Types



- **PP181 / PP281**
- **Displays**
 - 10.4" TFT color VGA; 256 colors
 - 15" TFT color XGA; 256 colors
- **Function keys**
- **Number keys**
- **Touch screen (PP281)**

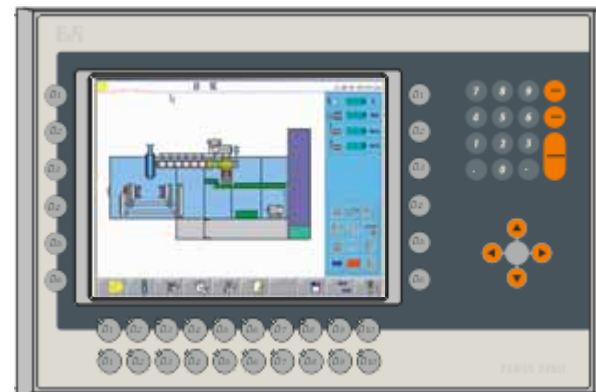


Power Panel 100 / 200

Display Types



- **PP182 / PP282**
- **Displays**
 - 10.4" TFT color VGA; 256 colors
- **Function keys**
- **Number keys**
- **Touch screen (PP281)**



Power Panel 100 / 200

Technical Data



- **Power Panel 100 / 200**

- Intel compatible 266 MHz processor
- Up to 64 MB SDRAM
- Ethernet 10/100
- Serial RS232
- 2 x USB
- Compact Flash slot
- No fan
- Power supply 24 V DC

- **Power Panel 200**

- 256 kB SRAM
- Real-time clock
- Slots for insert modules (aPCI)



Power Panel 100 / 200 System Overview



- **Visualization with Power Panel 100**

- Terminal operation via Ethernet on
 - Power Panel 200
 - B&R 2005 (CP3xx)
 - IPC with Automation Runtime
- Connection via Ethernet or RS232 to
 - B&R 2003
 - B&R 2005
 - Systems from other manufacturers



- **Control and Visualization with Power Panel 200**

- Flexible communication using insert modules (aPCI)
 - CAN Bus
 - Remote I/O via X2X Link
 - ETHERNET Powerlink

Power Panel 100

System Configuration: Visualization

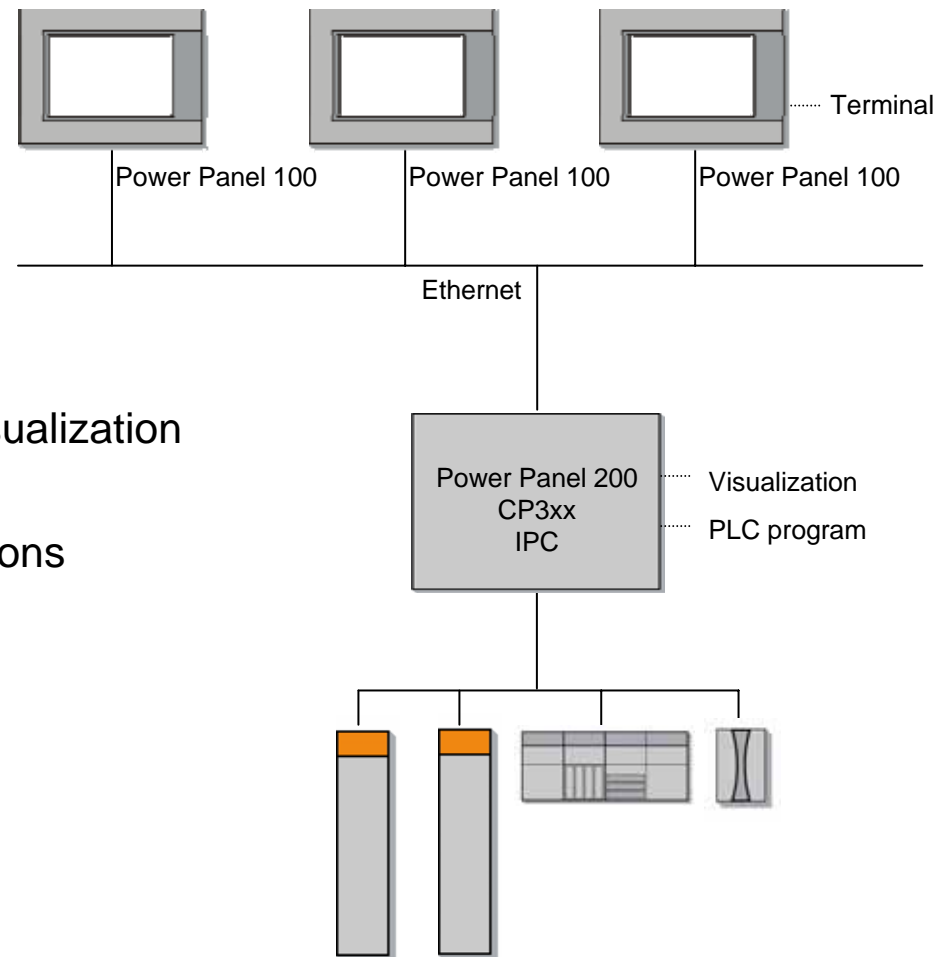


- **Terminal operation via Ethernet on**

- Power Panel 200
- B&R 2005 (CP3xx)
- IPC with Automation Runtime

- **Software structure**

- One project for control and visualization
- Multi-display operation
- Programmable interlock functions

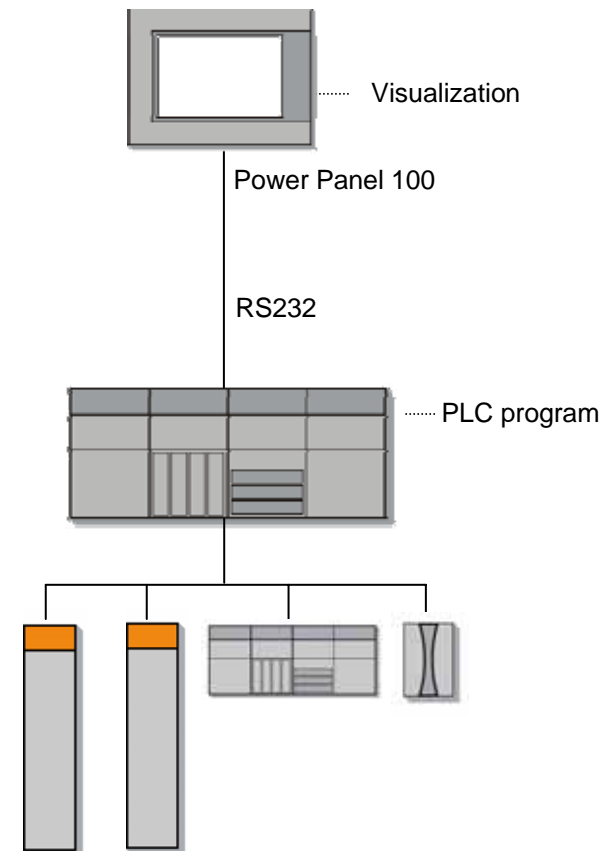


Power Panel 100

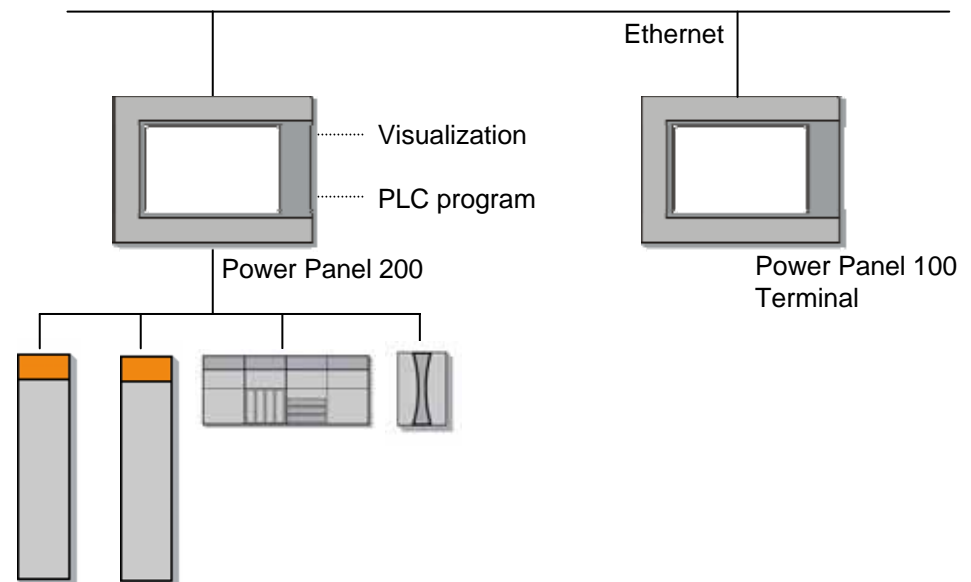
System Configuration: Visualization



- **Connection via Ethernet or RS232 to**
 - B&R 2003
 - B&R 2005
 - Systems from other manufacturers
- **Software structure**
 - Free programming from Ethernet TCP/IP and UDP/IP socket services
 - Free programming for serial interfaces using frame drivers
 - Open programming on the visualization device



- **Control and visualization**
- **Flexible communication via insert modules (aPCI)**
 - CAN bus
 - Remote I/O via X2X Link
 - ETHERNET Powerlink



Power Panel PP15



- **4 x 20 character LC display**
- **16 keys, 12 with LED**
- **Integrated input and output channels**
 - 16 digital inputs
 - 16 digital outputs
- **Interfaces**
 - RS232
 - CAN
- **Software: Automation Studio™**



Power Panel PP21



- **4 x 20 character LC display**
- **34 keys, 17 with LED**
- **Integrated input and output channels**
 - 10 digital inputs
 - 8 digital outputs
- **Interfaces**
 - RS232
 - CAN
- **6 slots for B&R 2003 screw-in modules**
- **Software: Automation Studio™**



Back

Rear View

Power Panel PP21

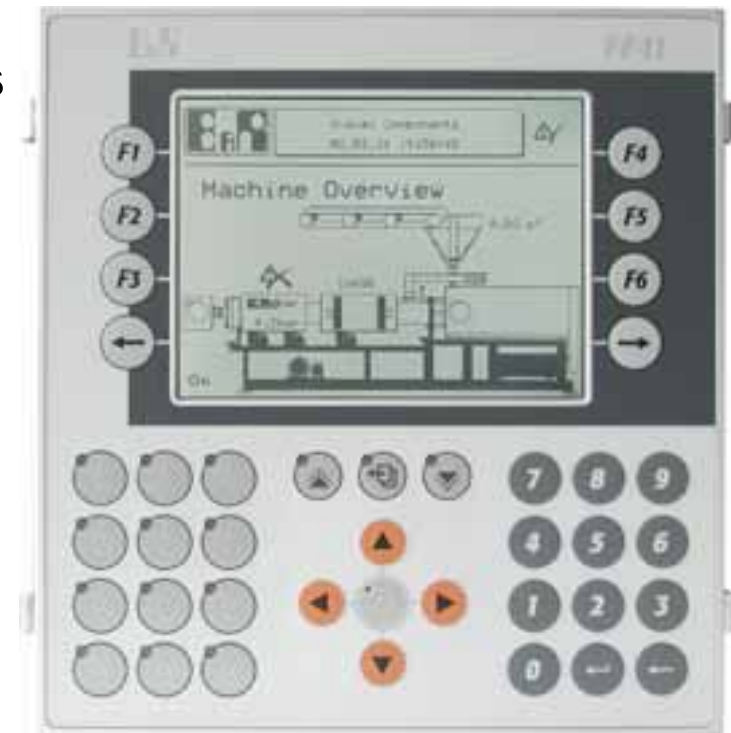


Back

Power Panel PP41



- **5.7" QVGA LC display b/w**
- **40 keys, 16 with LEDs**
- **Integrated input and output channels**
 - 10 digital inputs
 - 8 digital outputs
- **Interfaces**
 - RS232
 - CAN
- **6 slots for B&R 2003 screw-in modules**
- **Expansion for 2005 interface modules**
- **Software: Automation Studio™**



Power Panel PP41



Perfection in Automation

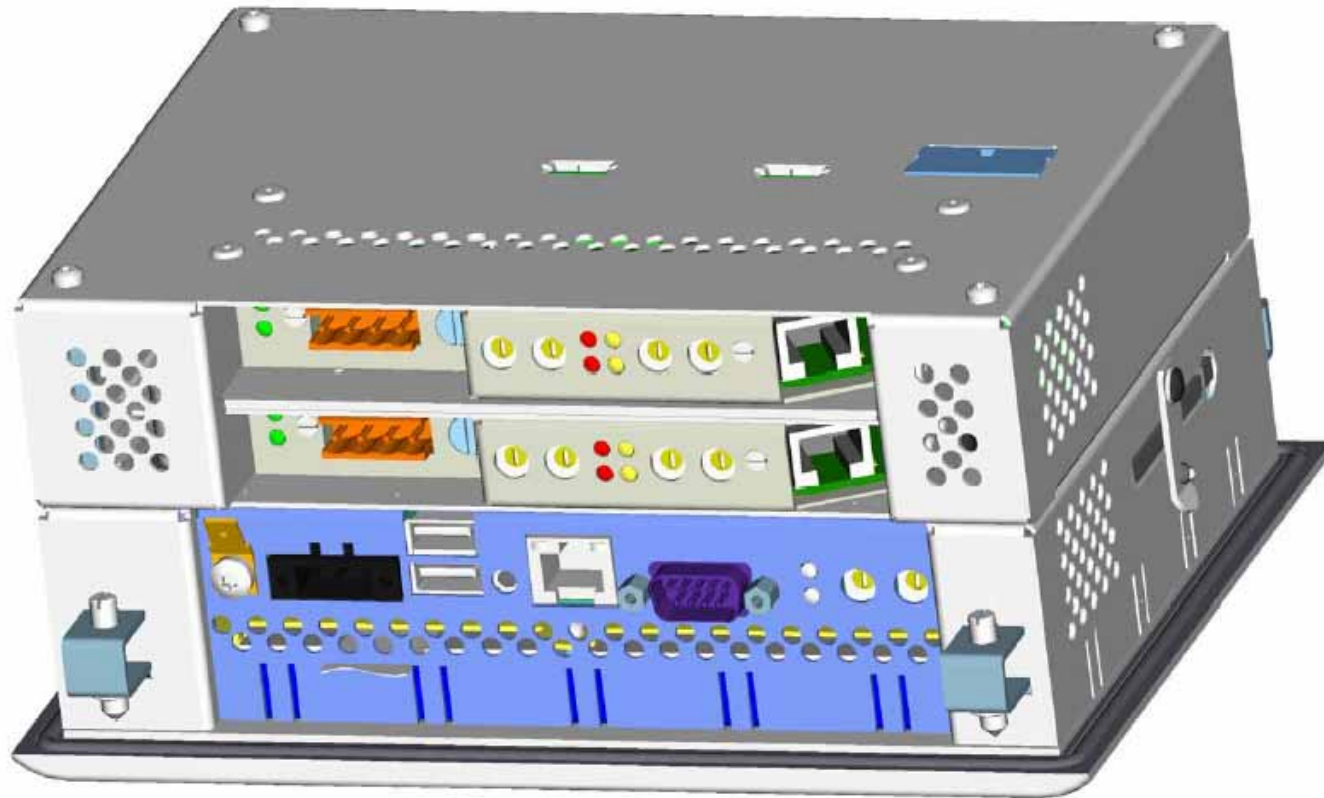


Back

Power Panel 200 Rear View 5.7"

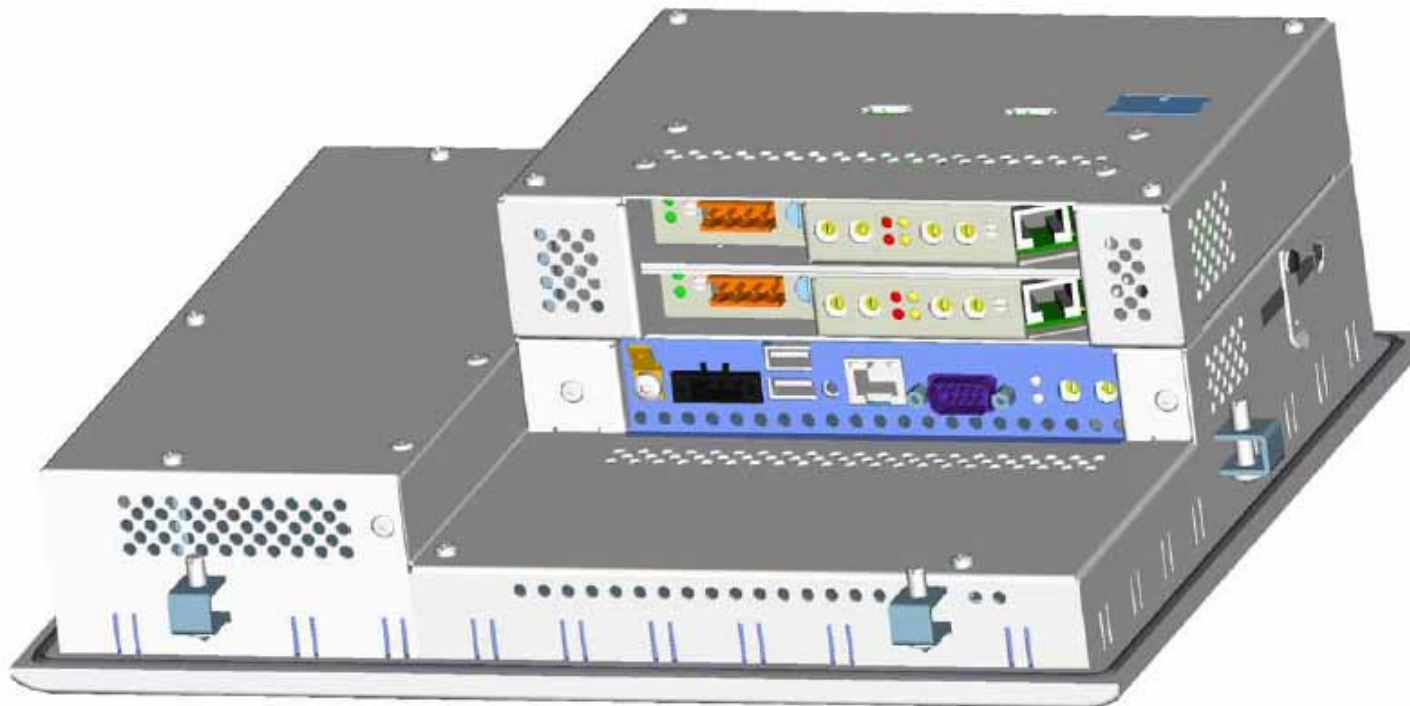


Perfection in Automation



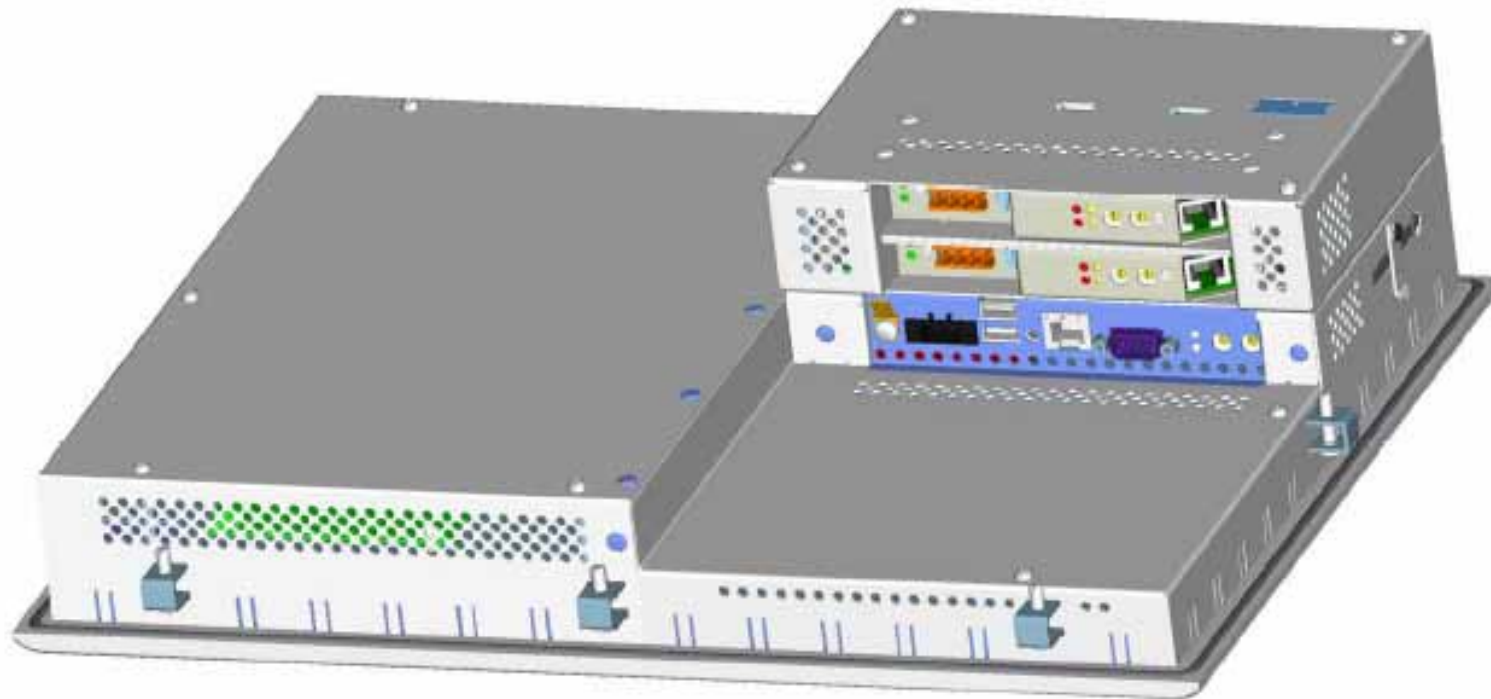
Back

Power Panel 200 Rear View 10.4"



Back

Power Panel 200 Rear View 15"



Back