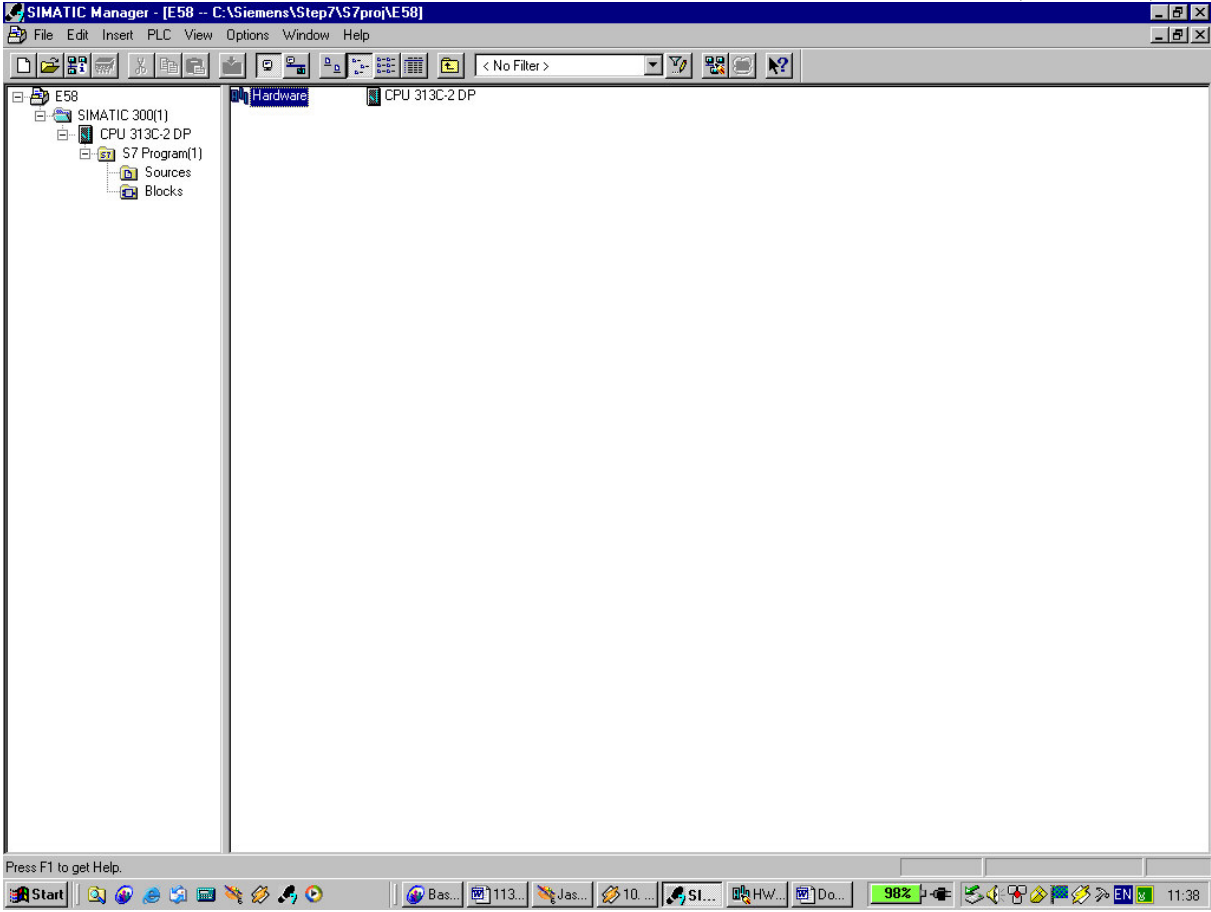


HOW TO CONFIGURE THE PROFIBUS MASTER WITH STEP7

1. Insert the GSD file, select the PLC and double-click the hardware icon (see below)



2. Select Options -> install new GSD file
3. Select the Omron GSD file

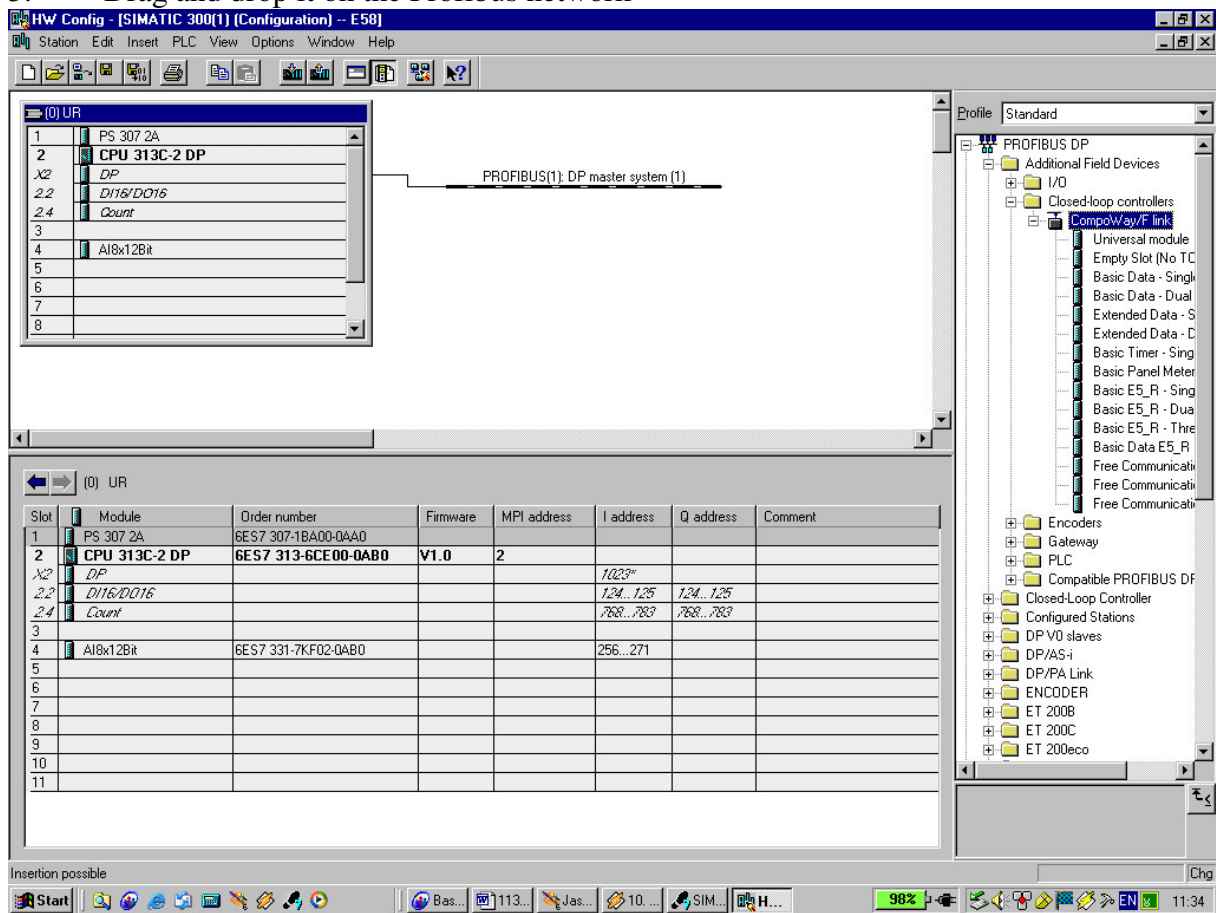
The screenshot shows the SIMATIC Manager HW Config interface for a SIMATIC 300(1) system. The main window displays a rack configuration for a PROFIBUS DP master system. A context menu is open over the rack, with 'Install New GSD...' selected. The rack configuration table is as follows:

Slot	Module	Order number	Firmware	MPI address	I address	Q address	Comment
1	PS 307 2A	6ES7 307-1BA00-0AA0					
2	CPU 313C-2 DP	6ES7 313-6CE00-0AB0	V1.0	2			
X2	DP				1023*		
2.2	D116/DO16				124...125	124...125	
2.4	Count				768...783	768...783	
3							
4	AI8x12Bit	6ES7 331-7KF02-0AB0			256...271		
5							
6							
7							
8							
9							
10							
11							

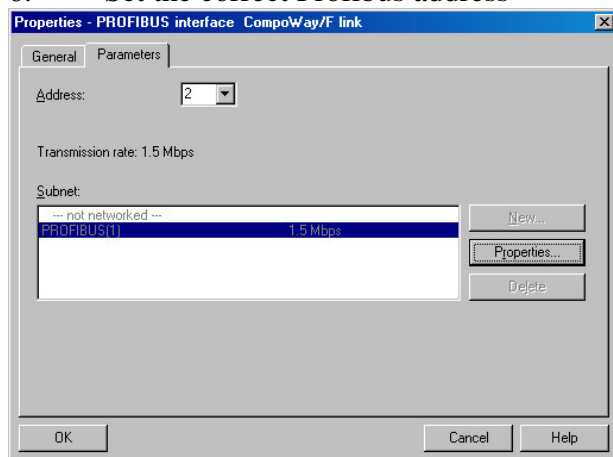
The right-hand pane shows the 'Profile' tree for 'PROFIBUS DP', with 'DP-NORM' selected under the 'CompoWay/F link' category. The bottom status bar indicates that new GSD files are being installed and the catalog is being updated.

4. Select the CompoWay/F Link from the catalog (Additional Field Devices -> Closed-loop controllers)

5. Drag and drop it on the Profibus network



6. Set the correct Profibus address



7. Select the Compoway/F gateway in the network
8. Select slot 1 and insert the modules that are needed (Selected the Empty slot module see next page)

HW Config - [SIMATIC 300(1) (Configuration) -- E58]

Station Edit Insert PLC View Options Window Help

0 UR

1	PS 307 2A
2	CPU 313C-2 DP
X2	DP
2.2	DI16/DO16
2.4	Count
3	
4	AI8x12Bit
5	
6	
7	
8	

PROFIBUS(1): DP master system (1)

(2) Compov

DP-NORM

Profile: Standard

- PROFIBUS DP
 - Additional Field Devices
 - I/O
 - Closed-loop controllers
 - CompovWay/F link
 - Universal module
 - Empty Slot (No TC)
 - Basic Data - Single
 - Basic Data - Dual
 - Extended Data - S
 - Extended Data - C
 - Basic Timer - Sing
 - Basic Panel Meter
 - Basic E5_R - Sing
 - Basic E5_R - Dua
 - Basic E5_R - Thre
 - Basic Data E5_R
 - Free Communicati
 - Free Communicati
 - Free Communicati
 - Encoders
 - Gateway
 - PLC
 - Compatible PROFIBUS DP
 - Closed-Loop Controller
 - Configured Stations
 - DP V0 slaves
 - DP/AS-i
 - DP/PA Link
 - ENCODER
 - ET 200B
 - ET 200C
 - ET 200eco

(2) CompovWay/F link

Slot	Module / ...	Order number	I Address	Q Address	Comment
1					
2					
3					
4					
5					
6					
7					
8					
9					
10					
11					
12					
13					
14					
15					
16					
17					

Insertion possible

Start | Bas... | 113... | Jas... | 10... | SIM... | H... | 98% | 11:35

HW Config - [SIMATIC 300(1) (Configuration) -- E58]

Station Edit Insert PLC View Options Window Help

0) UR

1	PS 307 2A
2	CPU 313C-2 DP
X2	DP
2.2	DI16/DO16
2.4	Count
3	
4	AI8x12Bit
5	
6	
7	
8	

PROFIBUS(1): DP master system (1)

[2] CompoWay/F link

DP-NORM

Profile: Standard

FIBUS DP

Additional Field Devices

- I/O
- Closed-loop controllers
- CompoWay/F link
 - Universal module
 - Empty Slot (No TC)
 - Basic Data - Single Loop
 - Basic Data - Dual Loop
 - Extended Data - Single Loop
 - Extended Data - Dual Loop
 - Basic Timer - Single Loop
 - Basic Panel Meter - Single Loop
 - Basic E5_R - Single Loop
 - Basic E5_R - Dual Loop
 - Basic E5_R - Three Loop
 - Basic Data E5_R - Four Loop
 - Free Communications - read
 - Free Communications - write
 - Free Communications - operation
- Encoders
- Gateway
- PLC
- Compatible PROFIBUS DP Slaves
- Closed-Loop Controller
- Configured Stations
- IPV0 slaves
- IP/AS-i
- IP/PA Link
- ENCODER
- IT 200B
- IT 200C
- IT 200eco

[2] CompoWay/F link

Slot	Module / ...	Order number	I Address	Q Address	Comment
1	0	Empty Slot (No TC)			
2					
3					
4					
5					
6					
7					
8					
9					
10					
11					
12					
13					
14					
15					
16					
17					

Press F1 to get Help.

Start | Ne... | 113... | 10... | SIM... | H... | Do... | SyC... | 98% | 12:28

9. Download the configuration to the Profibus master