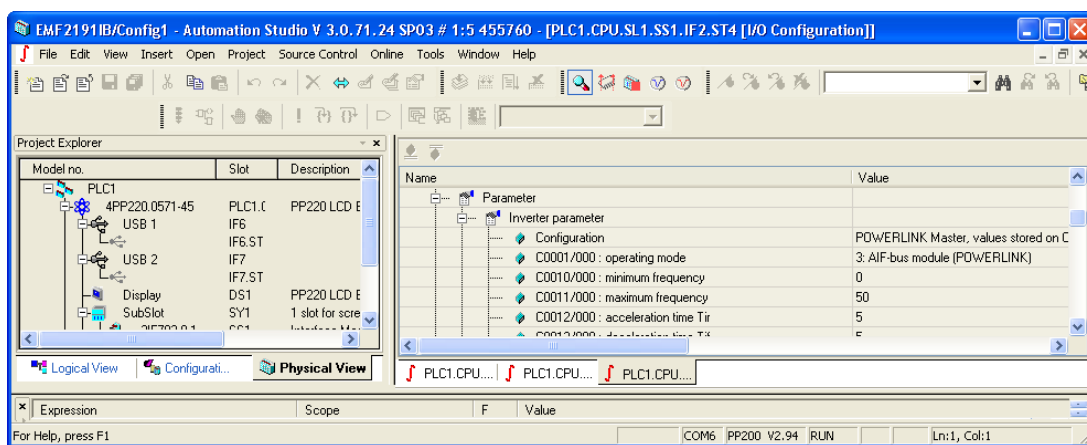


7. Parameterisation environment in the Automation Studio using the 8200vector as an example

The Automation Studio software allows you to transfer some common parameter values of the 8200vector to the drive every time the power panel is started. These values can be defined in the I/O configuration.

7.1. Automation Studio V2.6.0.7 (German version)

In the integrated version of the device description file, at the beginning, the default values of the listed codes are stored. When the B&R power panel is started, all values in the code list of the AS will be transferred to the 8200vector.



7.2. Automation Studio V3.0.71.24 SP03 (English version)

The imported XDD file contains the same codes as the previously integrated file. In the new XDD file, code 1 is preset to "30000" (FIX 32 factor 10000 considered!) so that process data communication can take place via the AIF interface. If some of the codes provided need to be changed, the corresponding value (FIX 32 factor 10000 considered!) can be selected. When importing the XDD file, only the codes provided with a value will be transferred to the drive when the B&R power panel is started. This new function reduces the boot-up time of the bus system.

